



# Practical application to deliver Solutions

Presented to: ATIEC 2016

By: Bretton Wells

Date: 21 September 2016

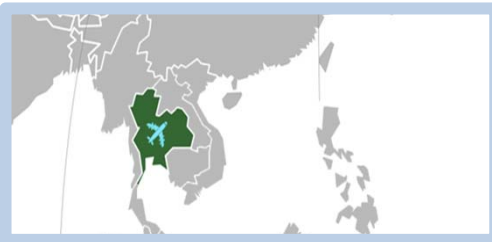
*Aviation Information World - Forecasting the Future*



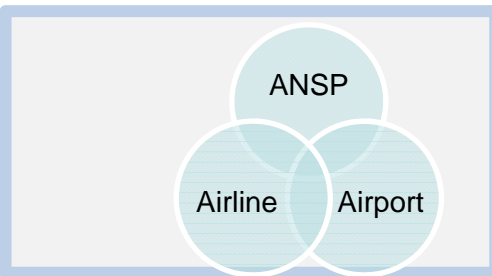
# Information Sharing Opportunities



- Data access and exchange across regional Air Navigation Service Providers (ANSPs), Airlines, and Airports is insufficient

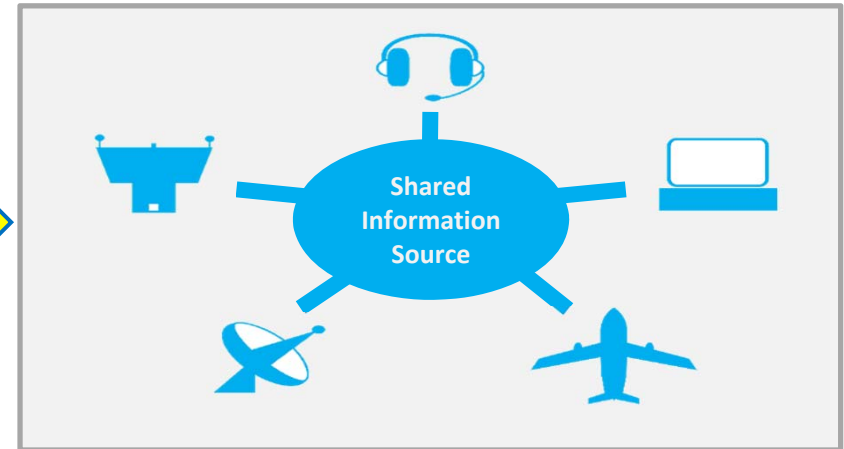
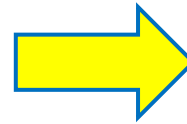
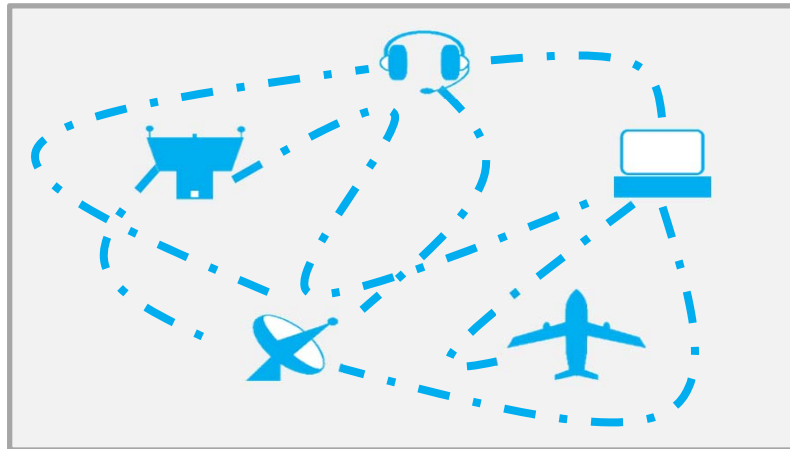


- Need for Collaborative Decision Making (CDM) process, tools, improved situational awareness, and training across regional Air Traffic Management (ATM) stakeholders



- Opportunity for new architectures to enable operational goals

# A Problem we aim to solve...



## Problem:

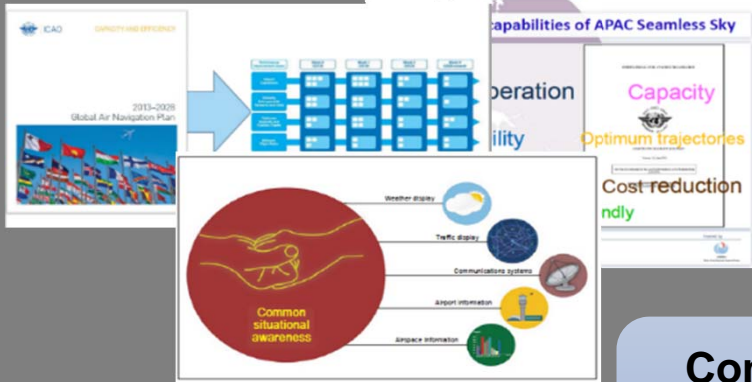
- Conflicting multiple information sources
- Point-to-point system connections
- Limited data sharing and isolated
- Inability for true situational awareness and decision implications

## Solution:

- A single shared information source for data and apps
- A system-wide integrated data (SWIM)
- Open data sharing and collaborative decision making
- Holistic view of operations

# Benefits: Data Convergence

## Global and Regional Goals



## Stakeholder Surveys, Feedback, and Discussions



Airline



ANSP



Airport

Convergence on needs for ATFM/CDM and SWIM

## Industry Studies

Table A: Regional passenger traffic and capacity growth, market shares and load factors in 2013\*

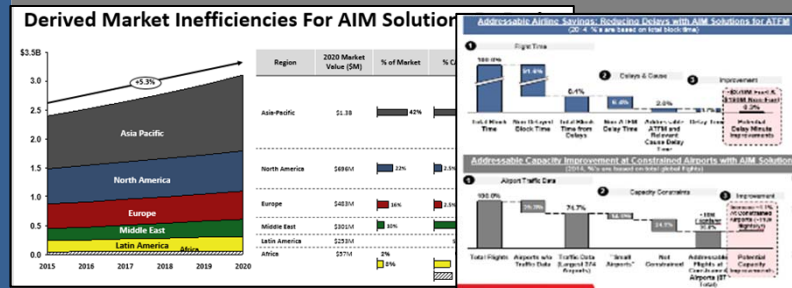
	International		Domestic		Total		Capacity Offset	Load Factors
	Revenue Passenger Kilometres				ASKs	LFs		
	Traffic Growth	Market Share	Traffic Growth	Market Share				
Africa	7.4%	3%	4.2%	1%	7.0%	2%	5.2%	69.6%
Asia and Pacific	5.2%	27%	9.6%	37%	7.2%	31%	6.7%	77.2%
Europe	3.8%	38%	3.7%	8%	3.8%	27%	2.6%	79.9%
Latin America and the Caribbean	8.6%	4%	4.2%	7%	6.3%	5%	5.0%	76.1%
Middle East	10.9%	13%	16.1%	1%	11.2%	9%	11.5%	76.9%
North America	6.2%	34%	1.9%	46%	2.2%	26%	1.9%	83.0%
World	5.2%	100%	5.1%	100%	5.2%	100%	4.6%	79.1%

ASKs: Available Seat Kilometres LFs: Passenger Load Factors

\* These figures are preliminary and cover scheduled commercial services only. The statistics are applicable to the traffic by region of airline domicile.

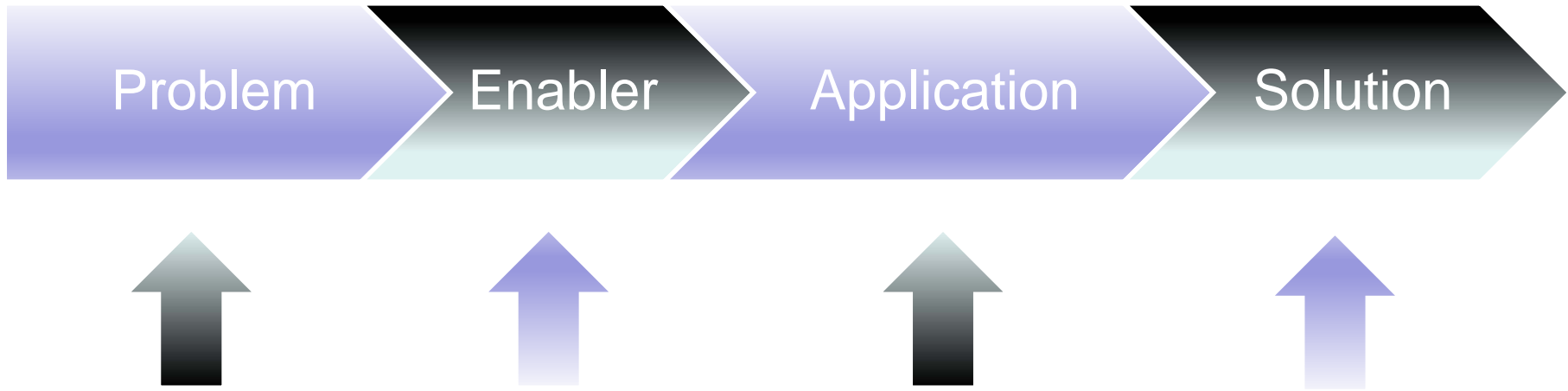
Air Navigation Report 2014 Edition ICAO

## Quantitative Research



[www.iata.org/SkyFusion](http://www.iata.org/SkyFusion)

# SWIM: Enabler to Solution



*Enabling sharing of information through data standards in order to achieve system to system data exchange*

[www.iata.org/SkyFusion](http://www.iata.org/SkyFusion)



# SWIM Enables....



Airline

- Improves situational awareness at home and abroad
- Provides tools for collaboration across borders
- Supports enhanced decision making
- Serves to link airlines with ATM network via SWIM-enabled information network



ANSP

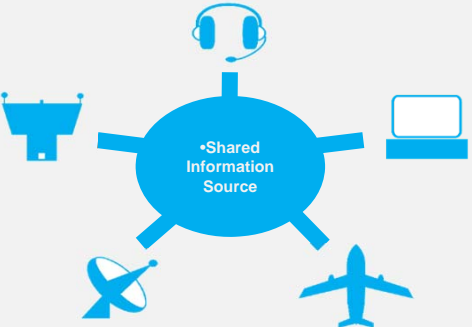
- Create Information and tools that complement existing decision support systems
- Enables common situational awareness, and effective dialogue between stakeholders
- Future-proofs ATM systems



Airport


- Improves situational awareness unconstrained by borders
- Provides collaboration tool
- Provides a means to interconnect Airport CDM system via ATM network

# SWIM Benefits : Air Traffic Flow Management (ATFM)



A central blue circle labeled "Shared Information Source" is connected by lines to four icons: a radar tower, a laptop, a satellite dish, and an airplane.

- ✓ SWIM can enable data for command center function to enhance CDM capabilities
- ✓ Information that provides situational awareness to users on impacts



A blue silhouette of an airplane in flight.

- ✓ Reduction of holding can save airlines as much as 71 USD per minute avoided

•\*source ACI study delay minute 2014

[www.iata.org/SkyFusion](http://www.iata.org/SkyFusion)

# SWIM Benefits : Empowering Decisions



✓ 95% Passengers are Happiest in Dwelling Time



✓ #1 thing passengers demand is accurate information



✓ Happy passengers spend 45% more



✓ Revenue enhancement of \$10 Average opportunity during delay which has been accurately communicated to passengers

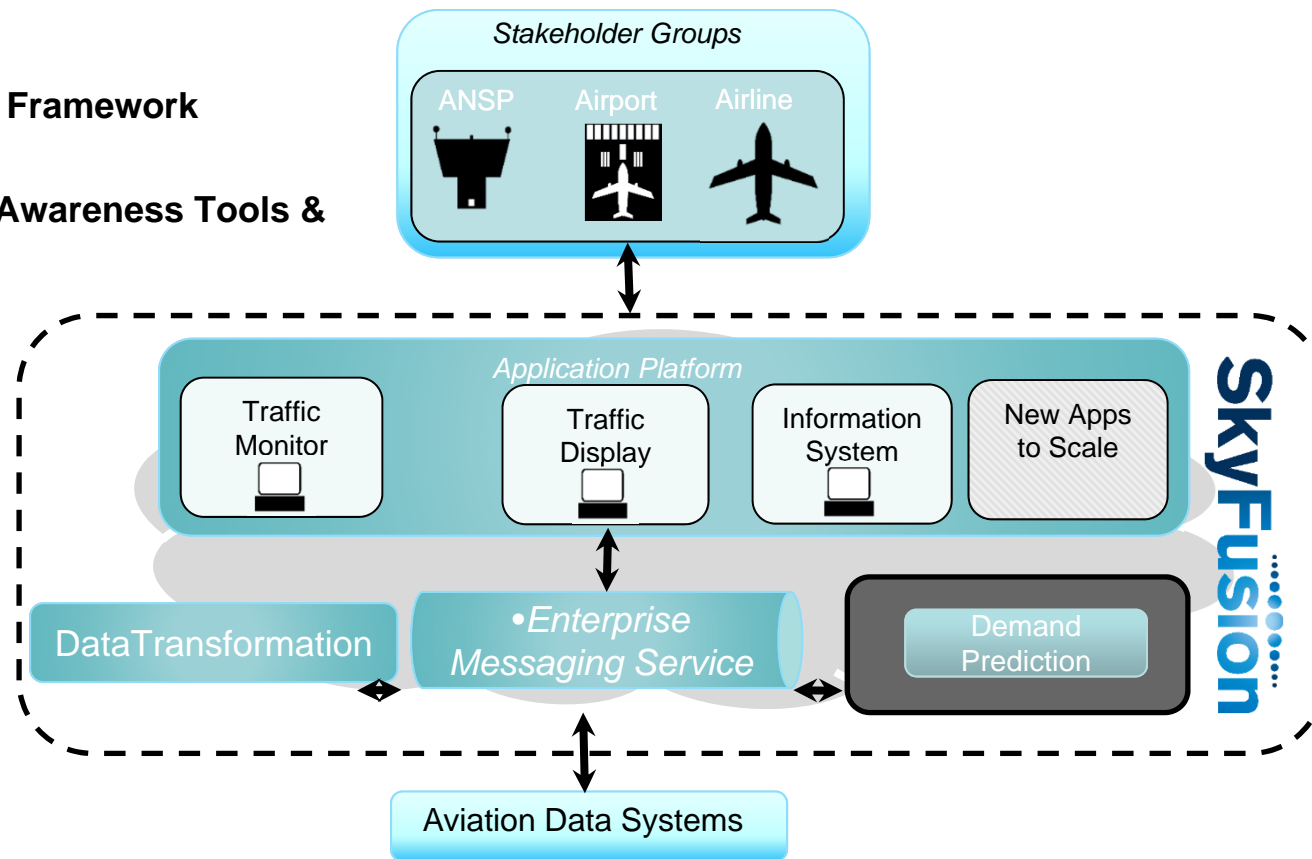
•\*95% source SITA 2015 IT report, 45% JD Power Study, #1 surveyed disruption

[www.iata.org/SkyFusion](http://www.iata.org/SkyFusion)





# Application : What is SkyFusion ?

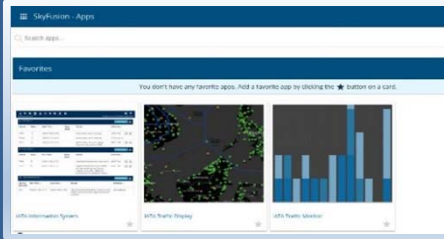
- In-cloud Data Exchange Platform
- Application Framework
- Situational Awareness Tools & Beyond



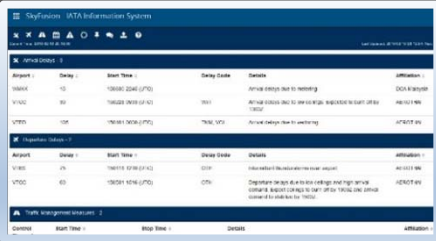
# Solution : Functional Cloud Environment

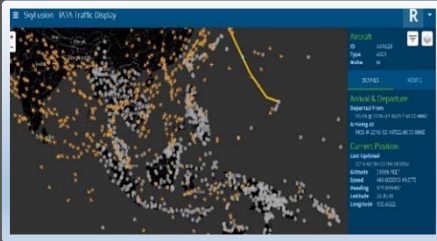
 **Communication /User Access**

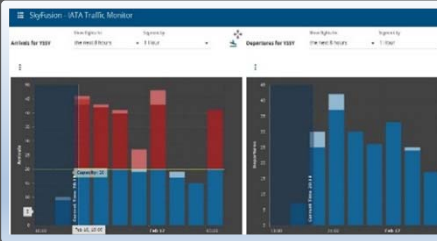
 **Single Sign-On**

 **Environment**

**The Applications**

 **Information System**

 **Traffic Display**

 **Traffic Monitor**

# SWIM Helps: CDM and ATFM



- ✓ Airlines, ANSPs and Airports are empowered to make decisions that are best for their operations
- ✓ SWIM enables cross border and cross organization data sharing
- ✓ Contributes to reducing inefficiencies avoidable with CDM & ATFM : >3B USD by 2020

•\*source A4A ATFM study 2014

# SkyFusion Benefits

## SkyFusion is a platform that:

- Connects disparate aviation stakeholder systems; and
- Hosts software-as-a-service (SAAS) applications

## SkyFusion solves two core needs:

- Enables sharing of data across systems from multiple stakeholders in internationally recognized, SWIM standard format
- Provides a one-stop shop for applications
  - Built on the data exchange, simplifying integration and lowering development cost



Learning by doing....

Let's move from **demonstration and theory** to a  
**real operational environment**

.....  
**SkyFusion**

[www.iata.org/skyfusion](http://www.iata.org/skyfusion)

