

*Global Information  
Management*

# Digital NOTAM Eurocontrol perspective

*Presented By:     Eduard Porosnicu,  
Eurocontrol*

*Date:                 August 26, 2015*



Federal Aviation  
Administration



## **AIR TRANSPORTATION INFORMATION EXCHANGE CONFERENCE**

**Global Information Management**

**August 25-27, 2015**

**NOAA Auditorium and Science Center • Silver Spring, MD**

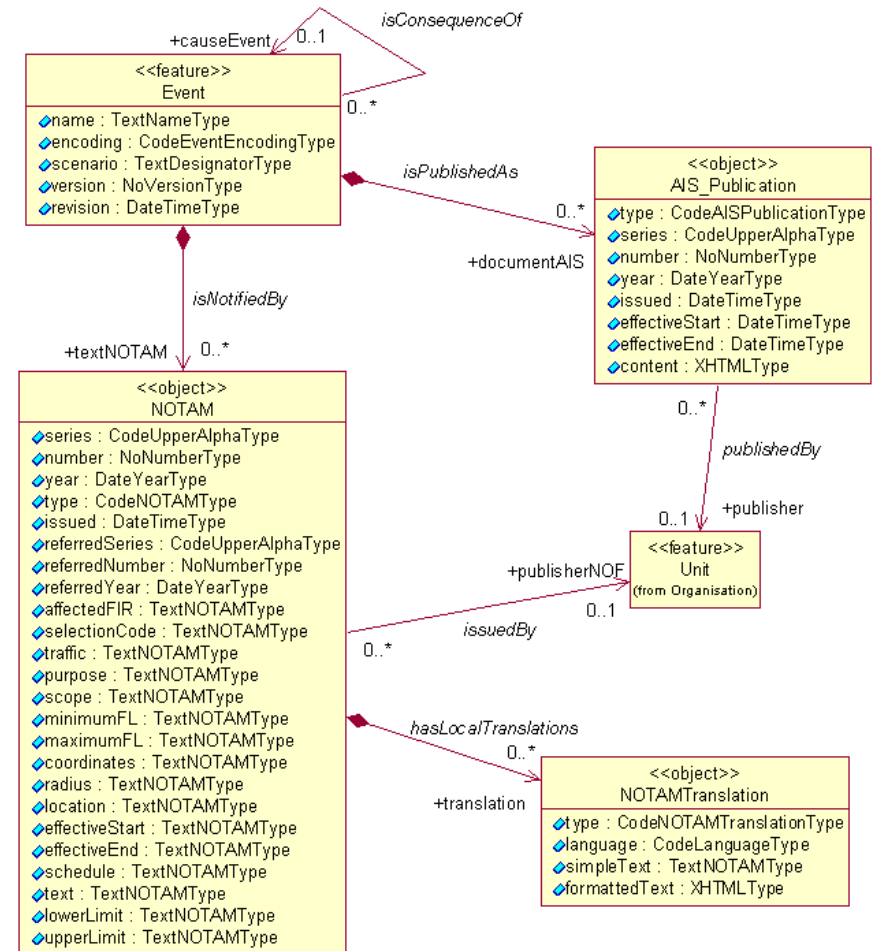
# Content

- Digital NOTAM Specification
- Implementation plans in Europe
- Graphical Pilot Briefing

- Purpose
  - Identify types of “events” for which the information is currently provided through NOTAM
    - Example: runway closed, navaid u/s, new obstacle, etc.
  - Provide the AIXM 5.1 encoding rules for each type of event
    - business rules!
  - Support the automatic generation of NOTAM messages (as long as necessary)
  - Overall, ensure global harmonisation

# Digital NOTAM Specification

- Introduced the concept of “aeronautical information events”
- Applicable to all aeronautical data, including AIP, charts, NOTAM data...
- WIP
  - extract a separate AI Event Specification
  - Including support for both short term and long term planning



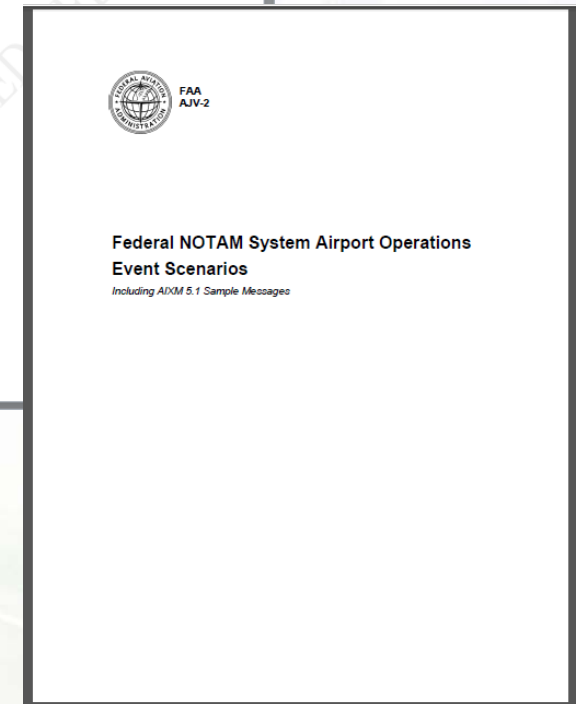
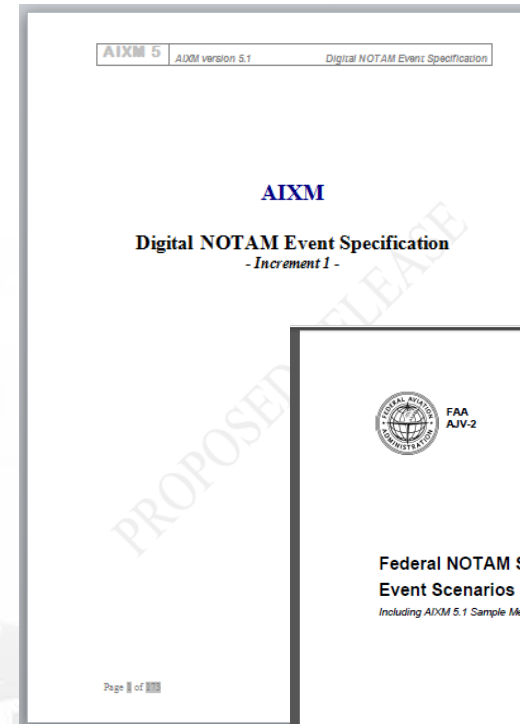
# Digital NOTAM Specification

- Event Specification version 2.0 (work in progress)

<b>•Increment 1 scenarios</b>	<b>•Increment 2 scenarios</b>
•Published special activity area – activation	•Displaced threshold
•Published ATS airspace - activation or deactivation	•Declared distances changes
•Ad-hoc special activity area – creation	•Runway portion closure
•Ad-hoc ATS airspace – creation	•Airport Usage limitation
•Route portion closure	•Runway usage limitation
•Route portion opening	•Taxiway usage limitation
•Aerodrome closure	•Approach lights unserviceable
•Runway closure	•Approach lights downgraded
•Navaid unserviceable	•Runway lights unserviceable
•New obstacle	•Obstacle lights unserviceable
•Taxiway closure	•Visual Approach slope indicator unserviceable
•Surface contamination (SNOWTAM)	•Taxiway lights unserviceable
•Other Event (any other situation that does not have a dedicated scenario)	

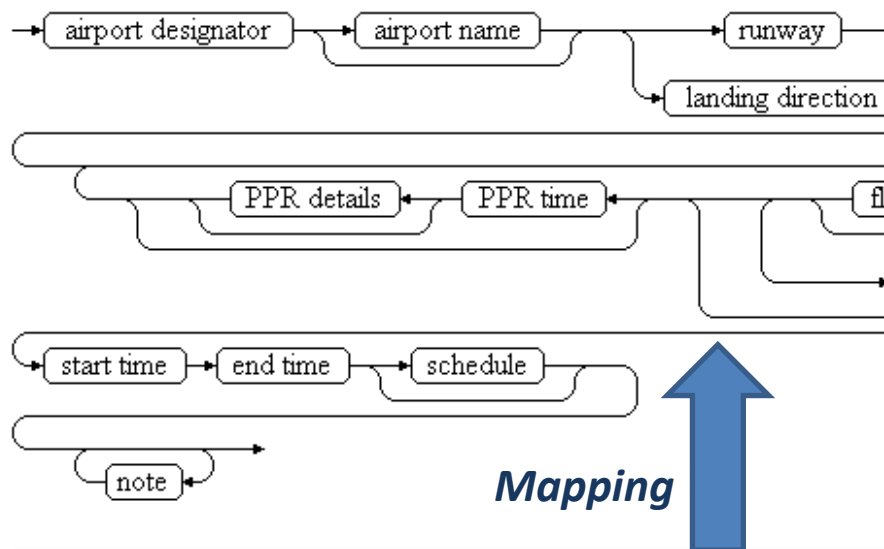
# Digital NOTAM Specification

- Eurocontrol
  - model the most common events, both airport and airspace
  - focus on R&D (SESAR)
- FAA
  - initial focus on all airport events
  - fast deployment (FNS-NDS)

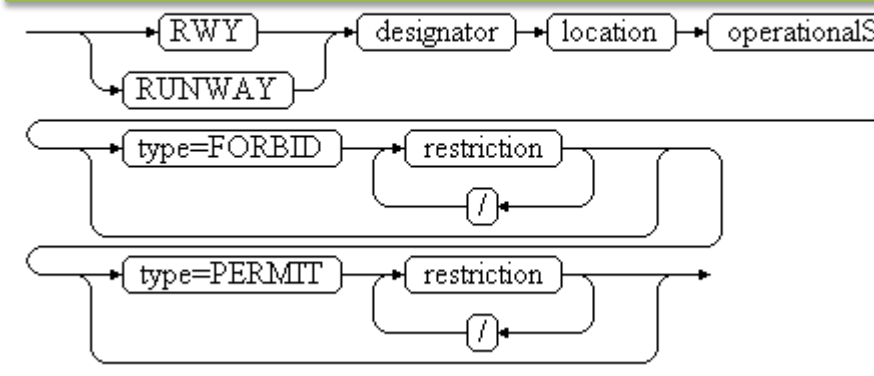


# Digital NOTAM Specification

## Event Specification 1.0 – Runway Closure



## FNS Airport Scenario– Runway/RunwayDire



# Digital NOTAM implementation in Europe

- Through Centralised Service CS#5 (EAIMS)
  - Digital NOTAM coding capability available in 2018
  - Including ePIB (graphical briefing)
  - Currently working on the functional specification (requirements)
  - One key challenge for deployment
    - Need a critical mass of Digital NOTAM data in order to justify the investment in graphical briefing
      - Some NOTAM will have to be post-digitised by the service provider, at least in the initial phase



# Graphical PIB – SESAR project

Current PIB = list of NOTAM

Fit to window width and enable scrolling

**EAD**  
**AERONAUTICAL INFORMATION SERVICES**

Pre-Flight Information Bulletin:		Validity (UTC):	
<b>NARROW ROUTE</b>		<b>09 MAY 2011 15:15 - 10 MAY 2011 15:15</b>	
Service Type: <b>FULL</b>			
Date: <b>09 MAY 2011</b>	Time: <b>15:15 UTC</b>	Flight Rules: <b>IFR</b>	
Contents: <b>Aerodromes, En-route, Warnings</b>			
Briefing Type: <b>International, Military</b>			
Height Limits (lower/upper):			
First: <b>000/380</b>		Other: <b>220/400</b> Last: <b>000/380</b>	
ADEP: <b>UKBB</b>	ADES: <b>LFPG</b>	Aerodromes: <b>ESBR EHAM</b>	
FIR: <b>UKBB UKLV EPWW LEBB LCAA EMMN EDGG LFEE EBBU LFFF EHAJ</b>			
Generic Route: <b>UKBB RR UP27 SW UF709 DIBED UL984 NOSPA UN657 RAPOR UZ157 VEDUS LFPG</b>			
Width of Route: <b>20 NM</b>		Radius around AD: <b>25 NM</b>	
Legend:			
+ NOTAM not older than 250 days			
* Different from original			
- Beginning of the message			
() Original NOTAM is available			

**AERODROMES**

**AERODROME (DEPARTURE)**

**UKBB - KYIV / BORYSPIL**

**\*\* TWY A1 AND TWY A2 CLOSED.**  
**FROM:** 18 MAR 2011 08:00 **TO:** 31 MAY 2011 08:00 (A0261/11)

**\*\* TWY A3 CLOSED**  
**FROM:** 24 MAR 2011 10:00 **TO:** 30 JUN 2011 23:59 (A0308/11)

**\*\* SEGMENT TWY C2 CLOSED FM TWY B TO ASBAM STAND 22.**  
**REF AIP UKBB AD 2.24.2-1.**  
**FROM:** 24 MAR 2011 10:00 **TO:** 30 JUN 2011 23:59 (A0301/11)

**\*\* SEGMENT TWY B BTN TWY A2 AND TWY A3 CLOSED DUE TO REPAIR.**  
**REF AIP UKBB AD 2.24.2-1.**  
**FROM:** 24 MAR 2011 10:00 **TO:** 30 JUN 2011 23:59 (A0306/11)

**\*\* STANDS 22-28 AND 29-31 CLOSED.**  
**FROM:** 04 APR 2011 08:00 **TO:** 30 JUN 2011 23:59 (A0361/11)

**\*\* DIGGING WIP. RWY 18L 135M TO THE WEST RCL. EOPT HGT 3M.**  
**FROM:** 04 APR 2011 08:00 **TO:** 30 JUN 2011 23:59 (A0360/11)

**AERODROME (DESTINATION)**

**LFPG - PARIS CHARLES DE GAULLE**

ING PROCESS EXPERIMENT UPON SOME TERMINALS  
 D 2FI ACFT STANDS  
 17 JAN 2011 06:00 **TO:** 15 MAY 2011 23:59 (A0217/11)

**E-ICING AND ANTI-ICING PROCESS SHOULD BE MODIFIED AS  
 WS-CONFIRMATION ON DE-ICING FREQUENCIES:  
 E-ICING/ANTI-ICING IN ONE PHASE:  
 ING OF TYPE I PRODUCT ( BRAND 'CLARIANT SAFEWING MP11938  
 0)'OR ' ABAX DE950' ) MELTING OF FLUID AND WATER  
 E-ICING/ANTI-ICING IN TWO PHASES:  
 ING OF TYPE I PRODUCT WITH MIXED FLUID/WATER FOLLOWED  
 APPLICATION OF TYPE II PRODUCT AT 100 PER CENT  
 STRATION (BRAND 'CLARIANT SAFEWING MP11 FLIGHT  
 22 JAN 2011 05:00 **TO:** 15 MAY 2011 23:59 (A0329/11)**

**OR RSY 356 KHZ, RSD 364 KHZ OUT OF SERVICE**  
 01 APR 2011 08:00 **TO:** 30 NOV 2011 16:00 (A1550/11)

**SUBJECT TO QUERY RADIO NAVIGATION AIDS TO BE CONFIRMED  
 GZ 370RHZ, CGO 399.5 KHZ OUT OF SERVICE**  
 01 APR 2011 08:00 **TO:** 30 NOV 2011 16:00 (A1551/11)

**ER NOTAM- AIRAC AIP SUP 018/11 IN FORCE ON 2011 APR 07TH,  
 ON ACFT STANDS.AVBL ON WWW.SIA.AVIATION-CIVILE.GOUV.FR**  
 07 APR 2011 00:00 **TO:** 16 DEC 2011 23:59 (A0909/11)

**ER NOTAM - AIP SUP 021/11 IN FORCE ON APRIL 07, 2011 :  
 FOR TWY U AND C COMPLIANCE.  
 NT PHASE : PHASE 1.  
 UP AVAILABLE ON WWW.SIA.AVIATION-CIVILE.GOUV.FR**  
 07 APR 2011 04:00 **TO:** 26 JUN 2011 04:00 (A0912/11)

**ER NOTAM - AIP SUP 020/11 IN FORCE ON APRIL 10TH, 2011 :  
 SATORY WORKS IN ORDER TO MODIFY THRESHOLD OBL :  
 G THIS PERIOD, TAXIWAYS UN, UC1, UC2, UC3 AND U BETWEEN N AND  
 NCLUSIVE ARE CLOSED H24  
 UP AVAILABLE ON WWW.SIA.AVIATION-CIVILE.GOUV.FR**  
 CHANGE OF WORK ENDING DAT 09 MAY 15H00 INSTEAD OF 10 MAY  
 06 MAY 2011 11:31 **TO:** 10 MAY 2011 06:00 (A2253/11)

**AERODROME (ALTERNATES)**

**- BRUSSELS/BRUSSELS-NATIONAL**

**S SHALL REQUEST START-UP BTN TSAT MINUS 5 MIN AND TSAT PLUS 5  
 EARLY REQUESTS WITHOUT FFL UPDATE ONLY AS OF EBOT MINUS 15 MIN  
 NLY AFTER PRIOR PILOT CHECK ON ALL DOORS CLSD AND PUSHBACK  
 ABLE OR PRESENT AT THE ACFT.**  
 05 JUL 2010 15:10 **TO:** PERM A1436/10

**STAND TAXILANE STRIP 1 CLSD DUE TO WIP**  
 28 MAR 2011 06:00 **TO:** 30 JUN 2011 15:00 A0476/11

**AT I RWY 02 MISSING BARETTE 390M FM THR**  
 31 MAR 2011 21:30 **TO:** 30 JUN 2011 14:00 A0512/11

**STANDS 305, 306, 307, 421, 422, 423 AND 424 CLOSED DUE TO WIP.**  
 05 APR 2011 07:55 **TO:** 01 JUL 2011 15:00 A0526/11

**EN PART TWY N2 ASBAM ACFT STAND 906 ONLY AVBL FOR ACFT ON  
 M.WINGSFAN 45M. CL. DISPLACED 25M TO THE NORTH**  
**FROM:** 26 APR 2011 05:00 **TO:** 16 MAY 2011 15:00 A0688/11

+ ALL ACFT DEPARTING FM APRON 9 SHALL BE PUSHED ON TO TWY N2 FACING  
 EAST ASBAM ACFT STAND 903 OR FURTHER EAST. PUSHBACK DISCONNECTION  
 AND ENGINE START UP ONLY ALLOWED FM THIS POSITION.

**DOWNGRADED TO CAT 1. PFR IHR FOR CAT II/III OPS**  
 011 18:00 **TO:** 10 OCT 2011 16:00 A0754/11  
 0400-1600

**ERDAM/SCHIPHOL**

**ERECTED AROUND PSN 52192099N 004452498E. THE CRANES  
 30M LEFT OF CL RWY 09 AND 660M BEHIND THR RWY 09.  
 IS 210FT MSL.  
 010 14:22 **TO:** 01 AUG 2011 15:00 A1043/10**

**STRELANDS EHAM AD 2.20 (LOCAL TRAFFIC REGULATIONS)  
 AVIATION:  
 (AVBL CAPACITY) FOR GA AND TECHNICAL FLIGHTS AS FLM:  
 140/1320 1400/1640 1820/2040  
 0840/1000 1200/1800 2000/2040  
 LIGHTS**

**011 01:00 **TO:** 30 OCT 2011 01:00 A0224/11**

**ERECTED AT PSN 52165908N 004431511E,  
 DEPARTURE END RWY 24, HEIGHT 105FT AMSL.  
 LANDS PAGE 2.SHAM-ACC-06-24 (04 JAN 10).  
 011 04:00 **TO:** 22 JUL 2011 17:00 A0244/11**  
 0400-FRI 1700

**011 05:00 **TO:** 22 MAY 2011 15:00 A0253/11**

**LANDS CHANGE OPERATING MINIMA OCA(OCH) RWY 22:  
 02.1: GP INSP CAT A-B=540(550).  
 011 09:32 **TO:** PERM A0288/11**

**LANDS CHANGE OPERATING MINIMA OCA(OCH) RWY 18C:  
 03C.1: GP/INSP CAT A-B=690(700).  
 03C.2: NDB/DME CAT A-B 690(700).  
 011 09:43 **TO:** PERM A0289/11**

**OF SERVICE**  
 011 08:11 **TO:** 22 MAY 2011 12:00 EST A0379/11

**EN TWY E3 AND TWY G.  
 EN RWY 04/22 AND TWY G.  
 CLSD.  
 0 SEE: WWW.EHAM.AERO  
 011 17:00 **TO:** 16 MAY 2011 07:00 A0383/11**

**EN TWY A, B, R, Q AND EXIT 82 PARTLY CLOSED. FOLLOWING  
 A JUNCTION REMAIN AVAILABLE:  
 AND TWY A  
 AND TWY B  
 2 AND TWY R  
 2 AND TWY B  
 2 BETWEEN TWY A AND TWY B AS AN ALTERNATE JUNCTION.  
 011 16:00 **TO:** 12 MAY 2011 13:00 A0396/11**

**TE**

**IV FIR**

\*\* TAKING INTO ACCOUNT PECULIARITIES OF FLIGHTS  
 PERFORMANCE IN THE AIRSPACE OF UKRAINE AND  
 COVER THE HIGH SEAS UNDER THE RESPONSIBILITY  
 OF UKRAINE, AIMING AT ENSURING SAFETY OF FLIGHTS

# Graphical PIB – SESAR project

## Pre-Flight Information Bulletin

Validity (UTC): from 09 May 2011 15:15 to 10 May 2011 15:15

Request Date: 09 May 2011 – 15:15 UTC  
 Flight Number: **AFR1953**  
 Departure Aerodrome: **UKBB** Boryspil  
 Destination Aerodrome: **LFPG** Paris Charles de Gaulle  
 Alternate Aerodromes: **EBBR** Brussels  
                                   **EHAM** Schiphol  
 FIR: **UKBV UKLV EPWW LZBB LKAA**  
           **EDMM EDGG LFEE EBBU LFFF EHAA**  
 Generic Route:  
           **UKBB KR UP27 SW UT709**  
           **DIBED UL984 NOSPA UN857**  
           **RAPOR UZ157 VEDUS LFPG**  
 Height Limits (lower/upper):  
           First: **000/380** Other: **220/400** Last: **000/380**  
 Width of Route: **20 NM**  
 Radius around Aerodrome: **25 NM**

**Content**

AERODROME Departure: **Kyiv/Boryspil UKBB**

- Stand/Push-back/Taxiing/Take-off
- Climb/Emergency return

EN-ROUTE

- SIGMET
- Upper wind and temperature
- FIR - **UKLV, UKBV**
- FIR - **EPWW, EDMM, EDGG**
- FIR - **LFEE**

AERODROME Arrival: **Paris Charles de Gaulle LFPG**

**Phase of flight**

- Approach/Landing
- Taxiing/Stand/Departure information

AERODROME Alternates: **Brussels EBBR**

- Approach/Landing
- Taxiing/Stand/Departure information

AERODROME Alternative: **Amsterdam EHAM**

- Approach/Landing
- Taxiing/Stand/Departure information

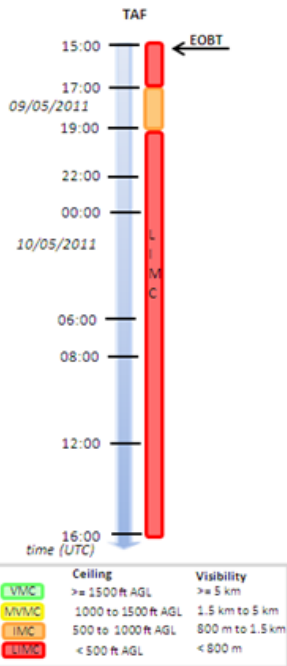


AFR1953 – 09 May 2011 15:15 UTC – UKBB-LFPG

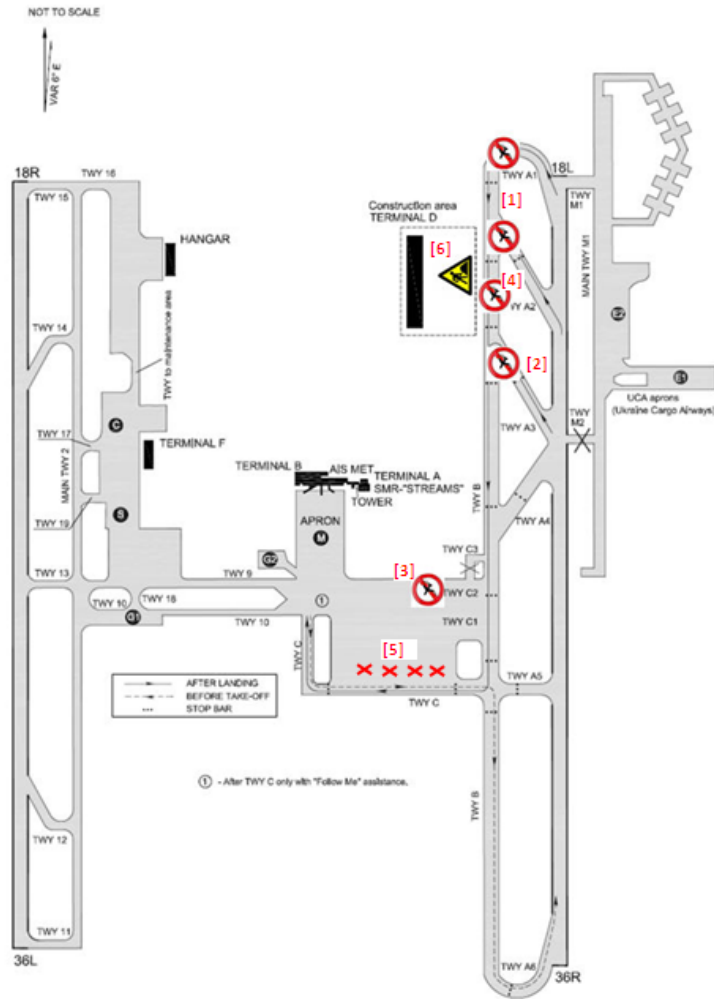
# Graphical PIB – SESAR project

**Departure Aerodrome: UKBB** *stand/push-back/taxiing/take-off*

**METAR:**  
 UKBB 091455Z 13509KT 090V165 9999 BKN500 20/12  
 Q1015 CAVOK NSW  
**TAF:**  
 UKBB 091432Z 0915/1016 10012G21KT 6000 OVC007  
 TEMPO 0915/0917 1000 SHSN BR BKN003 SCT008CB  
 BECMG 0917/0919 10016G25KT 4000 -SN BLSN OVC005  
 TEMPO 0919/1016 0600 +SHSN BLSN OVC003 BKN008CB  
 BECMG 1006/1008 14014G23KT TNM04/1003Z TXM00/1012Z



AFR1953 – 09 May 2011 15:15  
 UTC – UKBB-LFPG



# Graphical PIB – SESAR project

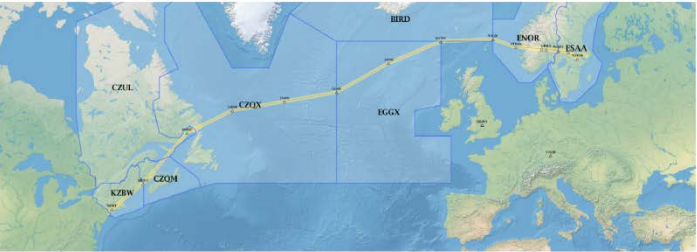
## → Prototype

- Prepared by Frequentis for SESAR 13.2.2

## → Covers

- enhanced Preflight Information Bulletin
- DNOTAM events
- Division into phases of flight
- Representation as charts / text / timeline

Enhanced Pre-flight Information Bulletin		Validity (UTC): from 02 Dec 2014 10:37 to 02 Dec 2014 19:26
Request Date:	02 Dec 2014 - 17:41 UTC	<b>zFIB Table of Contents:</b> Departure Aerodrome: KJFK JOHN F KENNEDY INTL • Stand Publish/Issued/Training/Take-Off • Club/Emergency status En-Route phase: • SIGMET • EFBW • CZQM • CZUL • CZQX • EGXN • EBD • ENOR • ESSA • NAV WARNINGS Destination Aerodrome: ESSA STOCKHOLM/Arlanda • Stand Publish/Issued/Training/Take-Off • Club/Emergency status Alternate Aerodromes: ESSB STOCKHOLM/Bromma • Stand Publish/Issued/Training/Take-Off • Club/Emergency status Memo chart:
Flight Number:	TEST01-IS	
Departure Aerodrome:	KJFK JOHN F KENNEDY INTL	
Destination Aerodrome:	ESSA STOCKHOLM/Arlanda	
Alternate Aerodromes:	ESSB STOCKHOLM/Bromma	
Emergency Aerodromes:	ESSP KBOS	
FIR:	KZBW CZQM CZUL CZQX CZUL CZQX EGGX BIRD ENOR ESAA	
Generic Route:	KJFK MERIT EBONY TUBOT 5450N 5540N 5630N 5920N RATSU VALDI OTRAX ADOPI GIMEX MASEV LEGPO TORVA ELTOK ESSA	
Height Limits (lower/upper):	First: 0 / 300 Other: 0 / 300 Last: 0 / 300	
Width of Route:	20 NM	
Radius around Aerodrome:	25 NM	



1 - 02 Dec 17:41 UTC - KJFK-ESSA Page 1 of 27

# ePIB Prototype

Departure	Arrival	EOBT Date	EOBT Time	Flight Identification
KJFK	ESSA	2015-08-04	10:16	UAL 234
KIAD	ESGG	2015-08-04	10:16	UAL 234

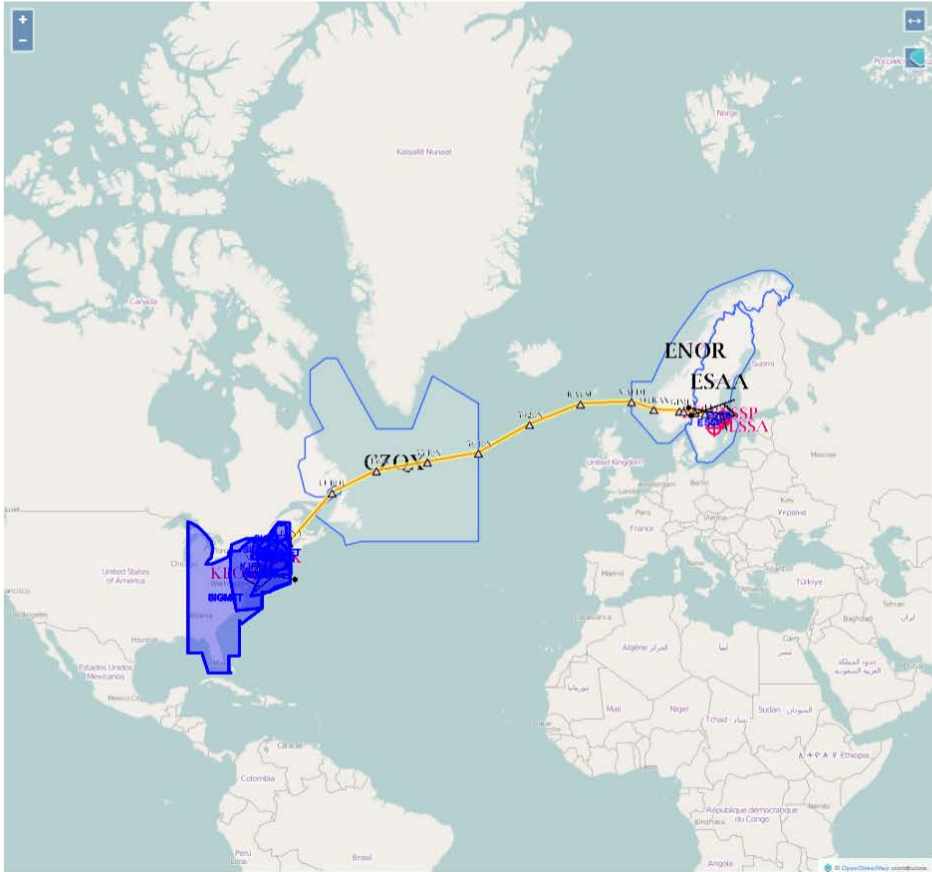
# ePIB Prototype

FREQUENTIS
Welcome dbriefing [logout](#)

**Integrated Digital Briefing**

UAL 234 KJFK - ESSA 15-07-29 12:06

- [Overview](#)
- [Aerodromes](#)
- [En-Route](#)
- [Settings](#)
- [Flight Plans](#)



Request Date:	Jul 29, 2015
Flight Number:	UAL 234
Departure Aerodrome:	KJFK JOHN F KENNEDY INTL
Destination Aerodrome:	ESSA Stockholm-Arlanda
Alternate Aerodrome:	ESSB STOCKHOLM/Bromma
Emergency Aerodromes:	ESSP KBOS
FIR:	KZBW CZQM CZUL CZQX EGGX BIRD ENOR ESSA
Generic Route:	KJFK MERIT EBONY TUBOT 5450N 5640N 5630N 5920N RATSU VALDI OTRAX ADOPI GIMEX MASEV LEGPO TORVA ELTOK ESSA
Height Limits (lower/upper):	First: 0/300 Other: 0/300 Last: 0/300
Width of Route:	33 NM
Radius around aerodrome:	25 NM

# ePIB Prototype

Integrated Digital Briefing x  
10.16.86.200:8082/BriefingHMI/#/main

**FREQUENTIS** Integrated Digital Briefing

Welcome dbriefing [logout](#)  
[Generate ePIB](#)

UAL 234 KJFK - ESSA 15-07-29 12:06

- Overview
- Aerodromes
  - DEP : KJFK
  - Airport
  - TMA
  - MET
  - ARR : ESSA
  - ALT : ESSB
  - Emergency
- En-Route
- Settings
- Flight Plans

Time filter: 15-07-29 11:06 to 15-07-29 13:06 Edit

<input checked="" type="checkbox"/>	OTHER	Apr07 14:30 to Jul29 16:20	6297 A 2015
	RWY 04L/22R WIP const NE end.		
<input checked="" type="checkbox"/>	OTHER	Apr07 14:30 to Jul29 16:20	4157 A 2015
	RWY 22L PAPI relocated left side		
<input checked="" type="checkbox"/>	RWY Declared Distance Change	Apr07 15:16 to Jul29 18:10	145 A 2015
	RWY 31R declared distances: TORA 10000FT TODA 1000 ...		
<input checked="" type="checkbox"/>	TWY Closure	Apr07 18:11 to Jul29 15:50	7668 A 2015
	TWY LA between TERMINAL 2 RAMP and TWY A closed		
<input checked="" type="checkbox"/>	TWY Closure	Apr07 18:11 to Jul29 15:50	6907 A 2015
	TWY E between TWY Y and TWY C closed		
<input checked="" type="checkbox"/>	OTHER	Apr07 14:30 to Jul29 16:20	7876 A 2015
	RWY 22R 6000ft distance remaining sign left side m ...		
<input checked="" type="checkbox"/>	OTHER	Apr07 14:30 to Jul29 16:20	7877 A 2015
	RWY 22R 5000ft distance remaining sign left side m ...		
<input checked="" type="checkbox"/>	OTHER	Apr07 14:30 to Jul29 16:20	7572 A 2015
	RWY 04L/22R NE 1171ft closed. Declared distances: ...		
<input checked="" type="checkbox"/>	OTHER	Apr07 14:30 to Jul29 16:20	7629 A 2015
	RWY 13L holding position markings at RWY 04L/22R I ...		
<input checked="" type="checkbox"/>	OTHER	Apr07 14:30 to Jul29 16:20	3381 A 2015
	JFK RWY 13L/31R between TWY E and TWY D 600FT X 15 ...		
<input checked="" type="checkbox"/>	OTHER	Apr07 14:30 to Jul29 16:20	7321 A 2015
	RWY 13L/31R all holding position sign at the inter ...		
<input checked="" type="checkbox"/>	OTHER	Apr07 14:30 to Jul29 16:20	7878 A 2015
	RWY 04L 4000ft distance remaining sign right side ...		
<input checked="" type="checkbox"/>	OTHER	Apr07 14:30 to Jul29 16:20	7879 A 2015
	RWY 04L 5000ft distance remaining sign right side ...		
<input checked="" type="checkbox"/>	OTHER	Apr07 14:30 to Jul29 16:20	3949 A 2015
	RWY 13R PAPI commissioned. A straight-in and offse ...		
<input checked="" type="checkbox"/>	OTHER	Apr07 14:30 to Jul29 16:20	7024 A 2015
	RWY 31R holding position markings at RWY 04L/22R S ...		
<input checked="" type="checkbox"/>	APN closure	Apr07 17:45 to Jul29 15:30	443 A 2015
	East Cargo Ramp Closed.		
<input checked="" type="checkbox"/>	Approach Lights UNS	Apr08 10:45 to Jul29 15:20	4124 A 2015
	RWY 04L/22R Approach Lighting System (ALS2) Unse ...		

# ePIB Prototype

The screenshot displays the 'Integrated Digital Briefing' (IDB) interface. A 'Time Filtering' dialog box is open, allowing users to filter data based on time. The dialog includes the following fields and controls:

- EOBT:** Wed Jul 29 2015 12:06: (with a calendar icon and a time selector showing 12:06)
- Minutes Before EOBT:** A slider control set to 60 minutes.
- Minutes After EOBT:** A slider control set to 60 minutes.
- Buttons:** OK and Cancel.

The background shows a map of an airport with various runways and taxiways labeled with numbers like 3949, 7024, 7876, 7877, 6297, 4157, 7878, 7879, 7572, and 4124. A red arrow points to runway 145. On the right side, a table lists various airport notices and closures:

Date	Time	Event
Apr07	14:30 to Jul29 16:20	6297 A 2015
Apr07	14:30 to Jul29 16:20	4157 A 2015
Apr07	15:16 to Jul29 18:10	145 A 2015
Apr07	18:11 to Jul29 15:50	7668 A 2015
Apr07	18:11 to Jul29 15:50	6907 A 2015
Apr07	14:30 to Jul29 16:20	7876 A 2015
Apr07	14:30 to Jul29 16:20	7877 A 2015
Apr07	14:30 to Jul29 16:20	7572 A 2015
Apr07	14:30 to Jul29 16:20	7629 A 2015
Apr07	14:30 to Jul29 16:20	3381 A 2015
Apr07	14:30 to Jul29 16:20	7321 A 2015
Apr07	14:30 to Jul29 16:20	7878 A 2015
Apr07	14:30 to Jul29 16:20	7879 A 2015
Apr07	14:30 to Jul29 16:20	3949 A 2015
Apr07	14:30 to Jul29 16:20	7024 A 2015
Apr07	17:45 to Jul29 15:30	443 A 2015
Apr08	10:45 to Jul29 15:20	4124 A 2015



# ePIB Prototype

Integrated Digital Briefing x  
10.16.86.200:8082/BriefingHMI/#/main

## FREQUENTIS Integrated Digital Briefing

Welcome dbriefing [logout](#)  
[Generate ePIB](#)

UAL 234 KJFK - ESSA 15-07-29 12:06

- Overview
- Aerodromes
  - DEP : KJFK
    - Airport
    - TMA
    - MET
  - ARR : ESSA
  - ALT : ESSB
  - Emergency
- En-Route
- Settings
- Flight Plans

Map: Long Island, New York area. KJFK is highlighted.

Metar: METAR KJFK 291151Z 2302MPS 8047 BR SCT250 24/22 Q1015  
[IWXXM METAR](#)

Taf: TAF KJFK 301400Z 291313 23004KT P6SM FEW250 TEMPO 1317 29004KT P6SM FEW250 TEMPO 1720 18007KT P6SM FEW050 SCT250 TEMPO 2022 18011KT P6SM FEW050 SCT250 TEMPO 2203 18016KT P6SM FEW050 SCT250 TEMPO 0313 21010KT P6SM FEW050 SCT250 TEMPO 1314 21008KT P6SM FEW030 SCT250=  
[IWXXM TAF](#)

# ePIB Prototype

FREQUENTIS
Welcome dbriefing [logout](#)

10.16.86.200:8082/BriefingHMI/#/main
Generate ePIB

**UAL 234 KJFK - ESSA 15-07-29 12:06**

**Overview**

- Aerodromes
  - DEP : KJFK
    - Airport
    - TMA
    - MET
  - + ARR : ESSA
  - + ALT : ESSB
  - + Emergency
- En-Route
  - FIR: KZBW
    - Config
    - MET
  - + FIR: CZQM
  - + FIR: CZUL
  - FIR: CZQX
    - Config
    - MET
  - + FIR: EGGX
  - + FIR: BIRD
  - FIR: ENOR
    - Config
    - MET
  - FIR: ESAA
    - Config
    - MET
- Settings
- Flight Plans

Time filter: 15-07-29 16:43 to 15-07-29 18:43 [Edit](#)

<input checked="" type="checkbox"/>	<b>Navaid Unserviceable</b>	Apr08 16:09 to Jul29 22:30	1021 A 2015
<input checked="" type="checkbox"/>	KALHOVD DME KLD CH84X U/S		
<input checked="" type="checkbox"/>	Navaid Unserviceable	Apr08 16:09 to Jul29 22:30	2034 A 2015
<input checked="" type="checkbox"/>	SBJ DME unusable 167-040 DEG beyond 34NM		
<input checked="" type="checkbox"/>	<b>Navaid Unserviceable</b>	Apr08 16:09 to Jul29 22:30	2 2015
<input checked="" type="checkbox"/>	NAV VORTAC OTS WEF 1308280059		

# ePIB Prototype

FREQUENTIS
Welcome dbriefing [logout](#)

[Generate ePIB](#)

UAL 234 KJFK - ESSA 15-07-29 12:06

- Overview
- Aerodromes
  - DEP : KJFK
    - Airport
    - TMA
    - MET
  - ARR : ESSA
  - ALT : ESSB
  - Emergency
- En-Route
  - FIR: KZBW
    - Config
    - MET
  - FIR: CZQM
  - FIR: CZUL
  - FIR: CZQX
    - Config
    - MET
  - FIR: EGGX
  - FIR: BIRD
  - FIR: ENOR
    - Config
    - MET
  - FIR: ESAA
    - Config
    - MET
- Settings
- Flight Plans

110W PIE-120SSE ILM WST ISSUANCES POSS. REFER TO MOST RECENT ACUS01

KWNS FROM STORM PREDICTION CENTER FOR SYNOPSIS AND METEOROLOGICAL DETAILS. AREA 2...FROM EKN-40SW CSN-50SW CRG-80SW CTY-CEW-SONNE MSL-VXX-EKN WST ISSUANCES POSS. REFER TO MOST RECENT ACUS01 KWNS FROM STORM PREDICTION CENTER FOR SYNOPSIS AND METEOROLOGICAL DETAILS.

**SIGMET:** WAUS41 KKCI 290245 MIAT WA 290245 AIRMET TANGO FOR TURB VALID UNTIL 290900 AIRMET TURB...NC ME NH VT MA RI CT NY LO NJ PA WV MD DC

DC DE VA AND CSTL WTRTS FROM YSC TO BGR TO 110SE BGR TO 200SE ACK TO 160SE SIE TO 190ESE ECG TO 20NE ILM TO 20S JST TO 70NE YYZ TO YOW TO YSC MOD TURB BTN FL270 AND FL400. CONDS CONTG BYD 09Z ENDG 09-12Z.

**SIGMET:** WAUS41 KKCI 290245 BOST WA 290245 AIRMET TANGO FOR TURB VALID UNTIL 290900 AIRMET TURB...ME NH VT MA RI CT NY LO NJ PA WV MD DC

DE VA NC AND CSTL WTRTS FROM YSC TO BGR TO 110SE BGR TO 200SE ACK TO 160SE SIE TO 190ESE ECG TO 20NE ILM TO 20S JST TO 70NE YYZ TO YOW TO YSC MOD TURB BTN FL270 AND FL400. CONDS CONTG BYD 09Z ENDG 09-12Z.

**SIGMET:** WAUS41 KKCI 290245 BOSS WA 290245 AIRMET SIERRA FOR IFR AND MTN OBSCN VALID UNTIL 290900 AIRMET IFR...NH VT MA NY FROM 30SE YSC TO 30W BOS TO 40WSW ALB TO 30E MSS TO 30SE YSC CIG BLW 010/VIS BLW 3SM BR/FG. CONDS DVLPG 06-09Z. CONDS CONTG BYD 09Z ENDG 12-15Z.

**SIGMET:** WAUS41 KKCI 290245 BOSS WA 290245 AIRMET SIERRA FOR IFR AND MTN OBSCN VALID UNTIL 290900 AIRMET IFR...ME NH MA RI AND CSTL WTRTS FROM 30ESE HUL TO 140E ACK TO 60ESE ACK TO 50SSE PVD TO 20WSW BGR TO 30ESE HUL CIG BLW 010/VIS BLW 3SM BR/FG. CONDS CONTG BYD 09Z THRU 15Z.

**SIGMET:** WAUS41 KKCI 290845 BOSS WA 290845 AIRMET SIERRA UPDT 1 FOR IFR AND MTN OBSCN VALID UNTIL 291500 AIRMET IFR...ME NH VT MA RI CT NY AND

CSTL WTRTS FROM 50SE HUL TO 160ESE ACK TO 70S ACK TO 30W BDL TO 50S PLB TO YSC TO 20W BGR TO 50SE HUL CIG BLW 010/VIS BLW 3SM BR/FG. CONDS CONTG BYD 15Z THRU 21Z.

**SIGMET:** WAUS41 KKCI 290845 BOST WA 290845 AIRMET TANGO UPDT 1 FOR TURB VALID UNTIL 291500 AIRMET TURB...ME NH MA RI CT NY NJ MD DE VA AND CSTL WTRTS FROM 70NW PQI TO 60NE PQI TO 200SE ACK TO 160SE SIE TO 70E ORF

TO 30SW PVD TO 40SE YQB TO 70NW PQI MOD TURB BTN FL280 AND FL420. CONDS CONTG BYD 15Z ENDG 15-18Z. OTLK VALID 1500-2100Z...TURB OH LE BOUNDED BY 20WNW YYZ-40WNW AIR-CVG-FWA-30SE ECK-20WNW YYZ MOD TURB BTN FL340 AND FL400. CONDS ENDG 18-21Z.

**SIGMET:** WAUS41 KKCI 290845 BOSS WA 290845 AIRMET SIERRA UPDT 1 FOR IFR AND MTN OBSCN VALID UNTIL 291500 AIRMET MTN OBSCN...ME NH VT NY FROM

50E YQB TO 20WNW BGR TO 20S MPV TO 30ENE MSS TO YSC TO 50E YQB MTNS OBSC BY CLDS/BR. CONDS ENDG 12-15Z.

# ePIB Prototype

FREQUENTIS
Welcome dbriefing [logout](#)

UAL 234 KJFK - ESSA 15-07-29 12:06

Time filter: 15-07-29 11:06 to 15-07-29 13:06 [Edit](#)

- Overview
- Aerodromes
  - DEP : KJFK
  - Airport
    - TMA
    - MET
  - ARR : ESSA
  - ALT : ESSB
  - Emergency
- En-Route
  - FIR: KZBW
  - Config
  - MET
  - FIR: CZQM
  - FIR: CZUL
  - FIR: CZQX
  - Config
  - MET
  - FIR: EGGX
  - FIR: BIRD
  - FIR: ENOR
  - Config
  - MET
  - FIR: ESAA
  - Config
  - MET
- Settings
- Flight Plans

<input checked="" type="checkbox"/>	OTHER	Apr07 14:30 to Jul29 16:20	6297 A 2015
<input checked="" type="checkbox"/>	RWY 04L/22R WIP const NE end.		
<input checked="" type="checkbox"/>	OTHER	Apr07 14:30 to Jul29 16:20	4157 A 2015
<input checked="" type="checkbox"/>	RWY 22L PAPI relocated left side		
<input checked="" type="checkbox"/>	RWY Declared Distance Change	Apr07 15:16 to Jul29 18:10	145 A 2015
<input checked="" type="checkbox"/>	RWY 31R declared distances: TORA 10000FT TODA 1000 ...		
<input checked="" type="checkbox"/>	TWY Closure	Apr07 18:11 to Jul29 15:50	7668 A 2015
<input checked="" type="checkbox"/>	TWY LA between TERMINAL 2 RAMP and TWY A closed		
<input checked="" type="checkbox"/>	TWY Closure	Apr07 18:11 to Jul29 15:50	6907 A 2015
<input checked="" type="checkbox"/>	TWY E between TWY Y and TWY C closed		
<input checked="" type="checkbox"/>	OTHER	Apr07 14:30 to Jul29 16:20	7876 A 2015
<input checked="" type="checkbox"/>	RWY 22R 6000ft distance remaining sign left side m ...		
<input checked="" type="checkbox"/>	OTHER	Apr07 14:30 to Jul29 16:20	7877 A 2015
<input checked="" type="checkbox"/>	RWY 22R 5000ft distance remaining sign left side m ...		
<input checked="" type="checkbox"/>	OTHER	Apr07 14:30 to Jul29 16:20	7572 A 2015
<input checked="" type="checkbox"/>	RWY 04L/22R NE 1171ft closed. Declared distances: ...		
<input checked="" type="checkbox"/>	OTHER	Apr07 14:30 to Jul29 16:20	7629 A 2015
<input checked="" type="checkbox"/>	RWY 13L holding position markings at RWY 04L/22R I ...		
<input checked="" type="checkbox"/>	OTHER	Apr07 14:30 to Jul29 16:20	3381 A 2015
<input checked="" type="checkbox"/>	JFK RWY 13L/31R between TWY E and TWY D 600FT X 15 ...		
<input checked="" type="checkbox"/>	OTHER	Apr07 14:30 to Jul29 16:20	7321 A 2015
<input checked="" type="checkbox"/>	RWY 13L/31R all holding position sign at the inter ...		
<input checked="" type="checkbox"/>	OTHER	Apr07 14:30 to Jul29 16:20	7878 A 2015
<input checked="" type="checkbox"/>	RWY 04L 4000ft distance remaining sign right side ...		
<input checked="" type="checkbox"/>	OTHER	Apr07 14:30 to Jul29 16:20	7879 A 2015
<input checked="" type="checkbox"/>	RWY 04L 5000ft distance remaining sign right side ...		
<input checked="" type="checkbox"/>	OTHER	Apr07 14:30 to Jul29 16:20	3949 A 2015
<input checked="" type="checkbox"/>	RWY 13R PAPI commissioned. A straight-in and offse ...		
<input checked="" type="checkbox"/>	OTHER	Apr07 14:30 to Jul29 16:20	7024 A 2015
<input checked="" type="checkbox"/>	RWY 31R holding position markings at RWY 04L/22R S ...		
<input checked="" type="checkbox"/>	APN closure	Apr07 17:45 to Jul29 15:30	443 A 2015
<input checked="" type="checkbox"/>	East Cargo Ramp Closed.		
<input checked="" type="checkbox"/>	Approach Lights UNS	Apr08 10:45 to Jul29 15:20	4124 A 2015
<input checked="" type="checkbox"/>	RWY 04L/22R Approach Lighting System (ALSF 2) Unse ...		

# ePIB Prototype

The screenshot shows a web browser window displaying the 'FREQUENTIS Integrated Digital Briefing' application. The browser's address bar shows the URL '10.16.86.200:8082/BriefingHML/#/main'. The application header includes the 'FREQUENTIS Integrated Digital Briefing' logo and a 'Welcome dbriefing' message with a 'logout' link and a 'Generate ePIB' button. The main content area displays flight information for 'UAL 234 KJFK - ESSA 15-07-29 12:06'. On the left, a navigation menu lists 'Overview', 'Aerodromes', 'En-Route', 'Settings' (highlighted), and 'Flight Plans'. The 'Settings' section contains several configuration options: 'Date/Time Output Format' (dropdown set to 'yy-MM-dd HH:mm'), 'Corridor Width (nm)' (input field with '33'), 'Max NOTAM Displayed/Map' (input field with '20'), 'Emergency Aerodrome search distance (nm)' (input field with '100'), 'Corridor Width for NOTAM(nm)' (input field with '150'), and 'Target CRS' (dropdown set to 'EPSG:4326'). Below these are checkboxes for 'Generate PDF' and 'Generate XML', both of which are checked. An 'Apply settings' button is located at the bottom of the settings area.

# Conclusions

- “Digital NOTAM” is not a NOTAM in another format!
  - it is AIXM 5.1 data complying with the coding rules established for a specified event scenario
- Global harmonisation of Digital NOTAM encoding is the common goal
  - FAA FNS-NDS versus Event Specification 2.0 is just a temporary situation due to
    - Different priorities
    - Faster FAA implementation
    - Digital NOTAM Specification 3.0 needs to bridge the eventual gaps (target 2018)
- Europe
  - Focus on Graphical PIB research and development (SESAR)
  - Moving towards implementation through Centralised Services



# Contacts

- **Eduard Porosnicu**  
(Senior AIM Specialist, EUROCONTROL)  
[eduard.porosnicu@eurocontrol.int](mailto:eduard.porosnicu@eurocontrol.int)
- **Alexandru Savulov**  
(SESAR WP 13.2.2 Project Lead, Frequentis)  
[alexandru.savulov@frequentis.com](mailto:alexandru.savulov@frequentis.com)