

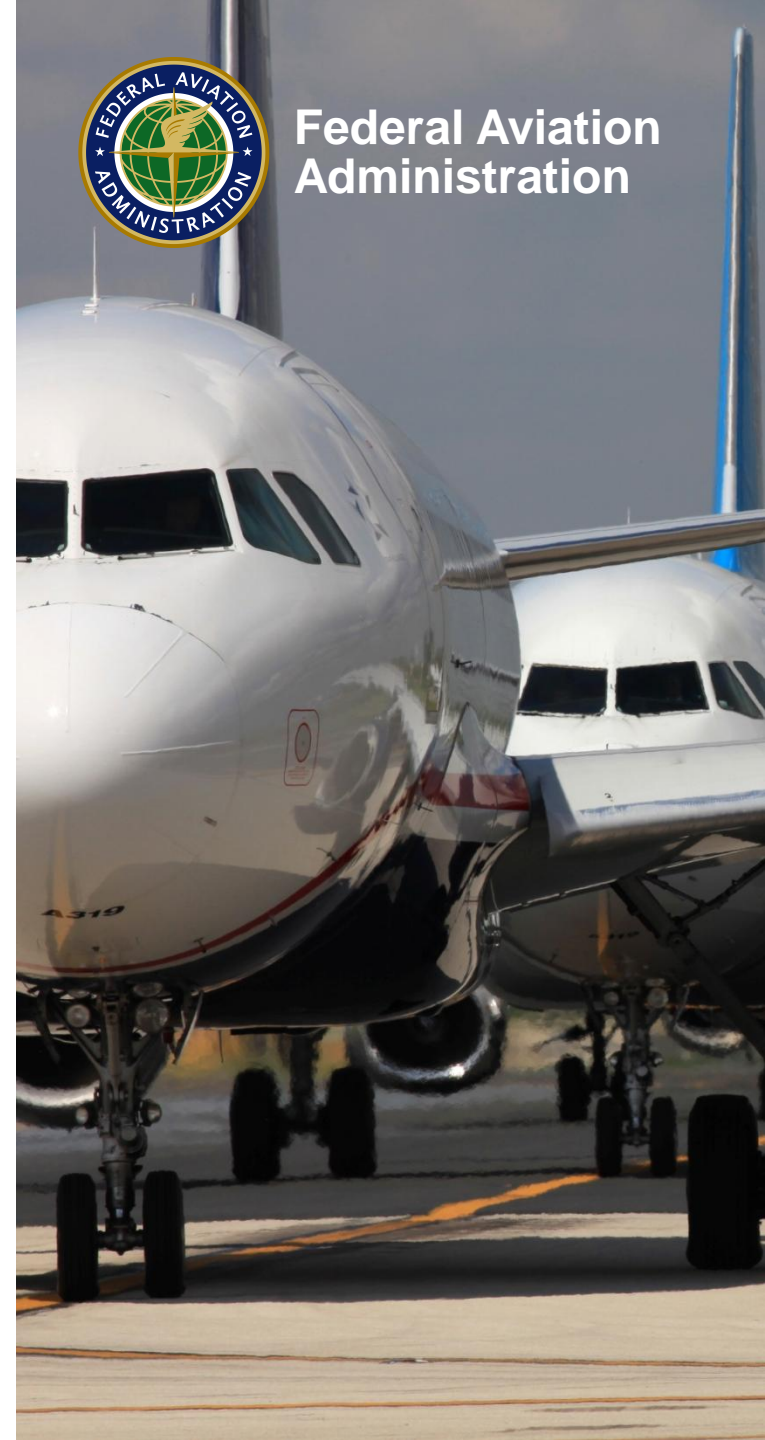
Common Support Services – Weather (CSS-Wx) Joint Capability Evaluation (CE)

By: Herng-Jen (Jen) Lin
Aviation Weather Branch, ANG-C34

Date: Aug 29, 2013



Federal Aviation
Administration



Overview

- **What is CE**
- **Evolution**
- **Joint CE**



Common Support Service – Weather (CSS-Wx)

- **Previously known as NextGen Network Enabled Weather (NNEW)**
- **Provides Wx data dissemination for NAS systems**
 - Standards in accessing weather data
 - OGC web services
 - Aviation weather data standards
 - NetCDF4, IWXXM, WXXM..
 - Provide subset/filter, coordinate reference system conversion
- **Leverages SWIM segment 2 capability**



Capability Evaluation (CE)

- **Prototype new concepts, both IT and operational**
- **Evaluate and fine tune technical approaches**
 - FAA Telecommunication Infrastructure & security
 - Better understand standards and specifications for acquisition
 - Integration with FAA System Wide Information Management (SWIM) middleware and security requirements
- **Demonstrate CSS-Wx/capabilities to Stakeholders in a structured, formal manner**
- **Common milestones for partner organizations**
 - FAA, MIT LL, NCAR, NOAA/GSD, AAoS, WTIC, NIEC, SWIM
- **Inter-agency partnership between FAA and NOAA National Weather Service (NWS)**
- **Use of Reference Implementations**



CE Evolution

- **Annual event FY07 - FY10**
 - Information Technology proof of concept
- **FY10**
 - Stood up FAA R&D domain internal enclave as the CE environment
 - Server virtualization
 - Wx data producers published with CSS-Wx WCSRI and WFSRI
- **FY11**
 - Optimizing network resource
 - Demonstrated integration of a NAS system (IDS-R/NIDS) with CSS-Wx
 - Demonstrated COTS product integration (i.e., FAA EON Google Earth) with CSS-Wx
 - Demonstrated multiple topologies/architectures



FY13: CSS-Wx Joint CE

- **Objective:**

- Demonstrate NextGen concept of NAS common weather picture enabled by CSS-Wx, SWIM and AAtS components
- Showcase an end-to-end-source-to-pilot use case with prototyped mobile apps onboard live aircraft continuously updated with live data
- Collaborative effort between FAA Programs (CSS-Wx, AAtS, WTIC) and NOAA/NWS for NextGen weather

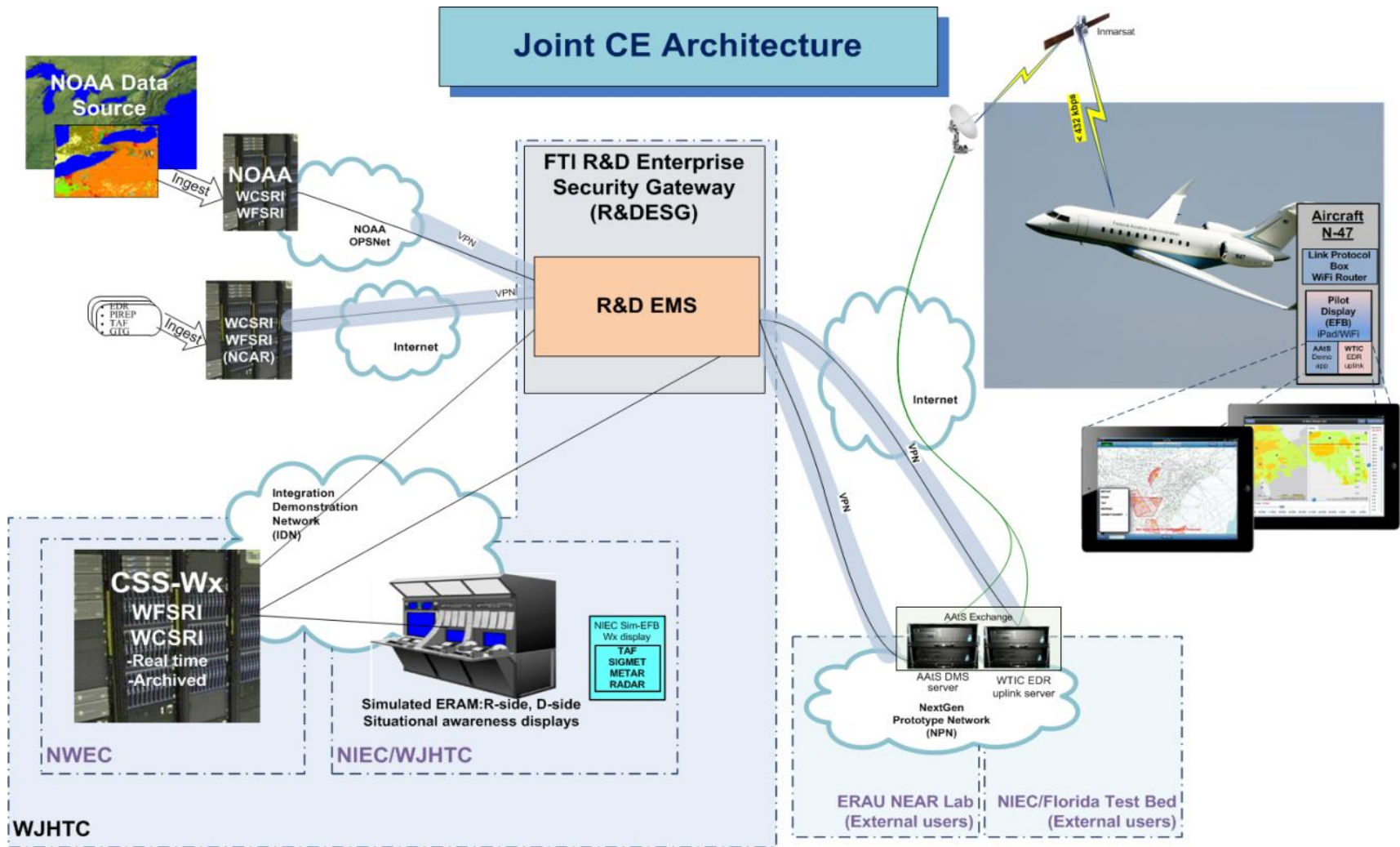


FY13: CSS-Wx Joint CE (cont'd)

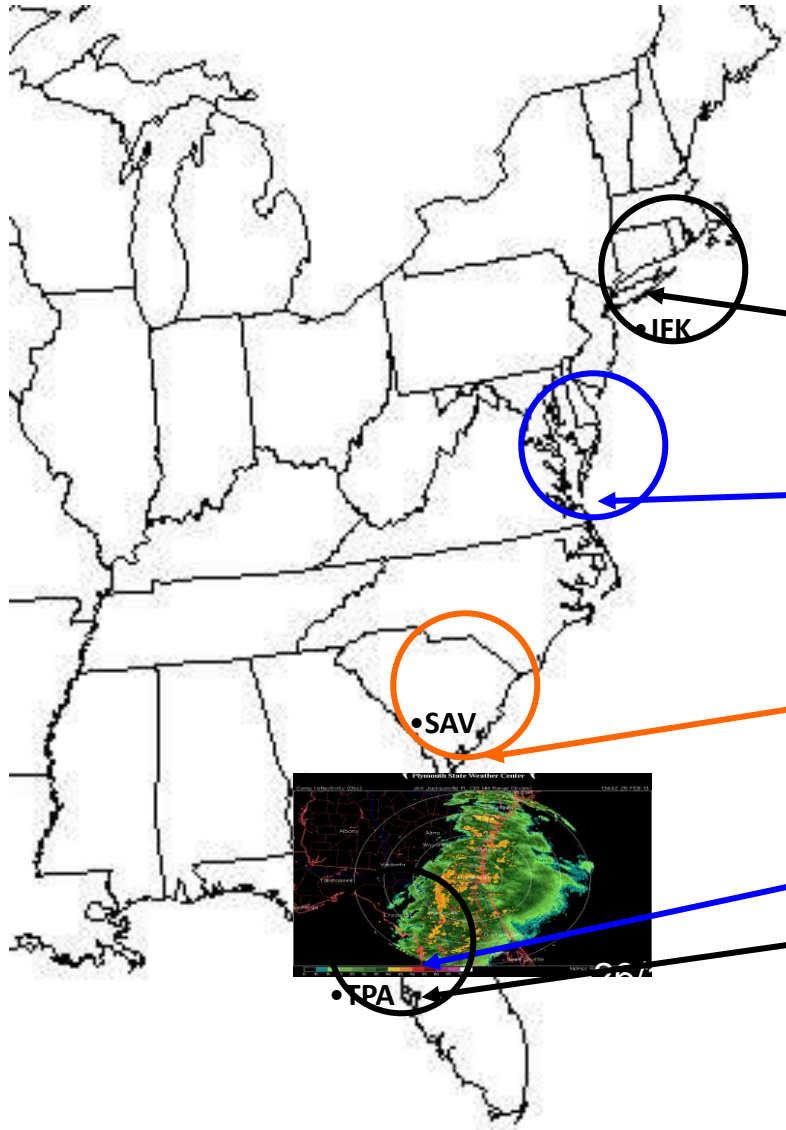
- **Two demonstrations events**
 - June 26 CE-1A
 - In NIEC lab, simulated center system and cockpit simulator
 - Both live data and republished-archived-data
 - Recorded WTIC EDR uplink app-test-run on FAA N-47 aircraft flight from April 16
 - July 30 CE-1B
 - Demo with live data onboard N-47
 - Common Wx Picture demo and discussion with live and republished-archived-data in the NIEC lab



Joint CE architecture



Scenario Sequence: JFK-TPA Flight



Based on February 26, 2013 archived observations and forecasts Wx data

- 0945Z: Preflight Briefing
- 1045Z: Pre-Taxi Update
- 1145Z: Depart JFK
- 1245Z: Inflight Update #1
- 1345Z: Inflight Update #2
 - Convective Wx Avoidance
 - Inflight Emergency Divert (SAV)
 - Turbulence – Altitude Change
- 1430Z: Inflight Update #3
- 1445Z: Arrive TPA



Federal Aviation
Administration



More information about CE

- <https://wiki.ucar.edu/display/NNEWD/Capability+Demonstrations>

