

Data model and schema extensions that accommodate regional needs

*Air Transportation Information
Exchange Conference
August 2013
Matt Peroutka NOAA/NWS*

Background

US maintains a number of filed differences with ICAO

- METAR/SPECI
- TAF
- SIGMET

Mostly, additional data

Need a way to convey these data within XML

Strategy, in XML

National-specific document...

```
<iwxxm-uk:METAR automatedReport="true" ...>  
  <iwxxm:validTime>...</iwxxm:validTime>  
  <iwxxm-uk:ukContent>...</iwxxm-uk:ukContent>  
  ...  
</iwxxm-uk:METAR>
```

Strategy, in XML

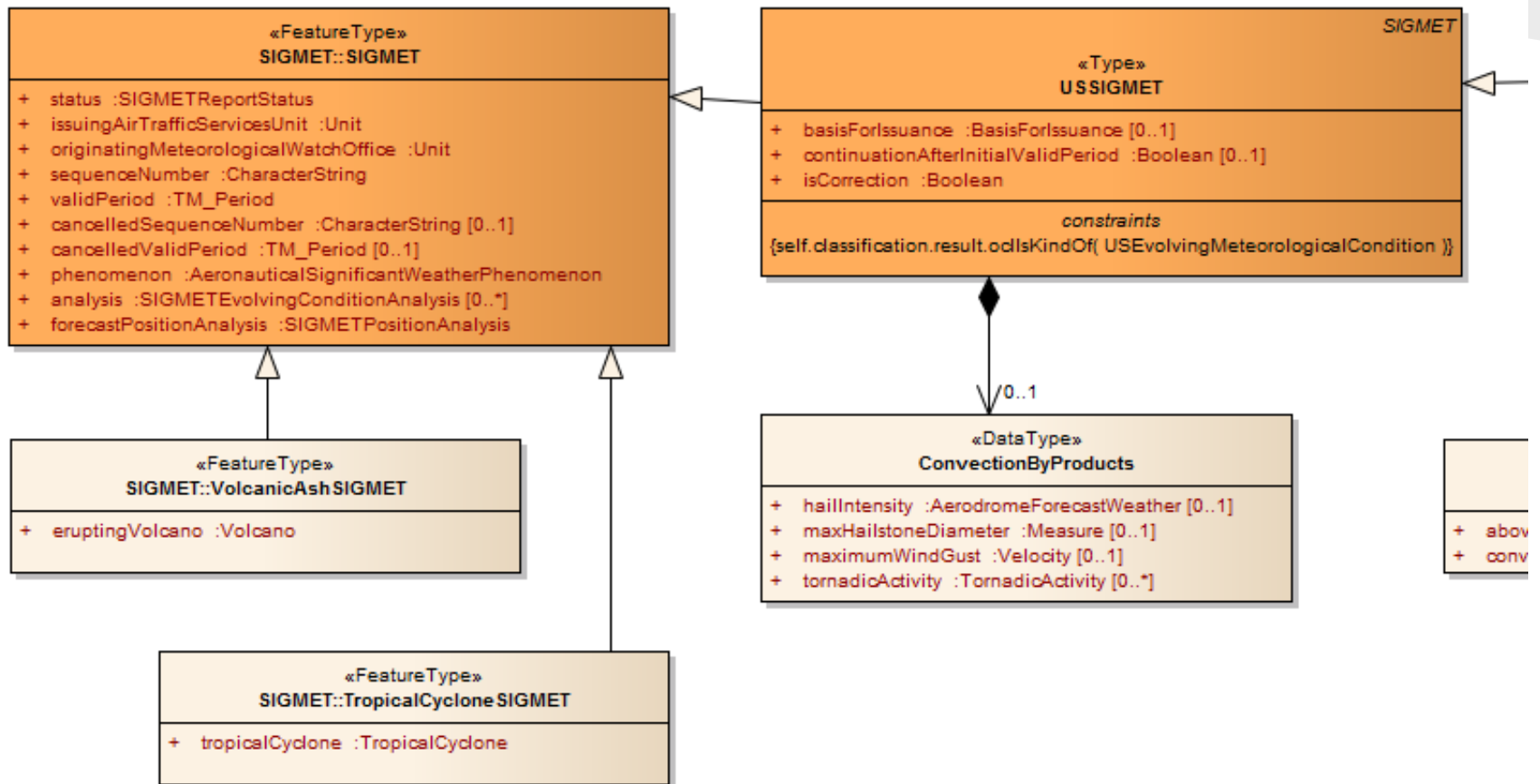
National-specific document...

must be converted to ICAO/WMO compliant document before international dissemination.

```
<iwxxm:METAR automatedReport="true" ...>  
  <iwxxm:validTime>...</iwxxm:validTime>  
  ...  
</iwxxm:METAR>
```

Strategy, in UML

class Context diagram: US SIGMETs



Consequences

Only extensions

- No subtractions
- No alterations

Regional namespace(s) required

“Sanitization” software required

US Regional Extension (iwxxm-us)

Four new data models/schemas

- USMETAR
- USSPECI
- USTAF
- USSIGMET

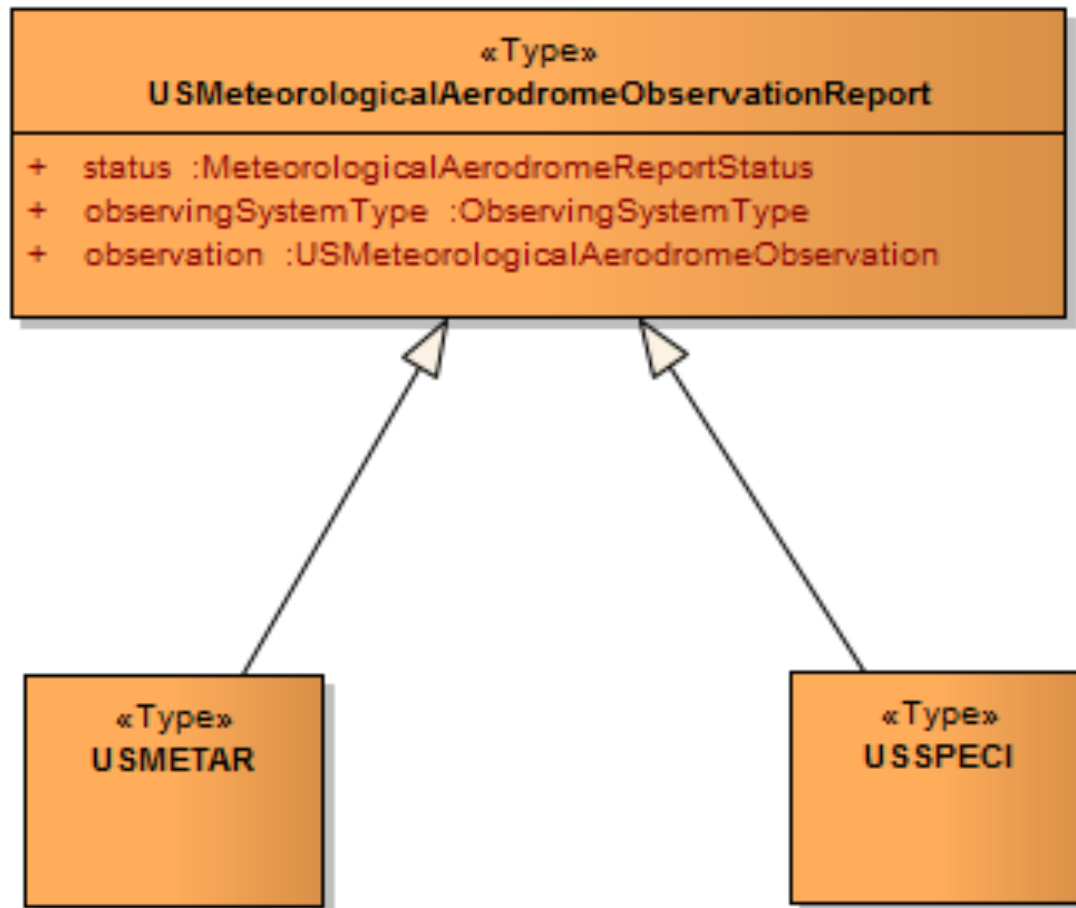
New namespace

<http://www.weather.gov/schemas/external/iwxxm-us>

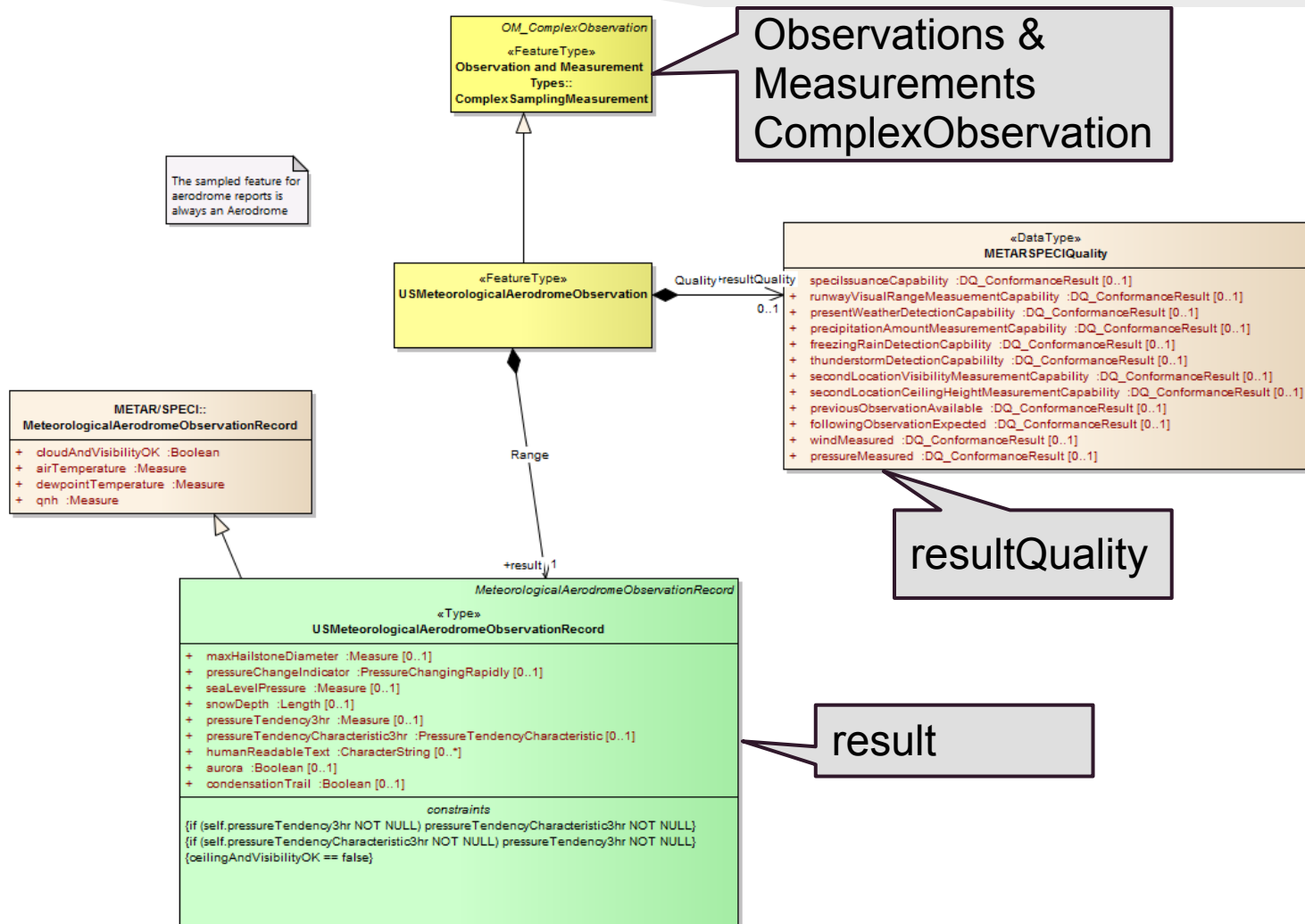
Attributes of iwxxm-us

- Extensions only
- Re-use of METCE/IWXXM constructs, where possible
- Use of quantity attribute, as in IWXXM
- Use of code lists and vocabulary attribute, as in IWXXM

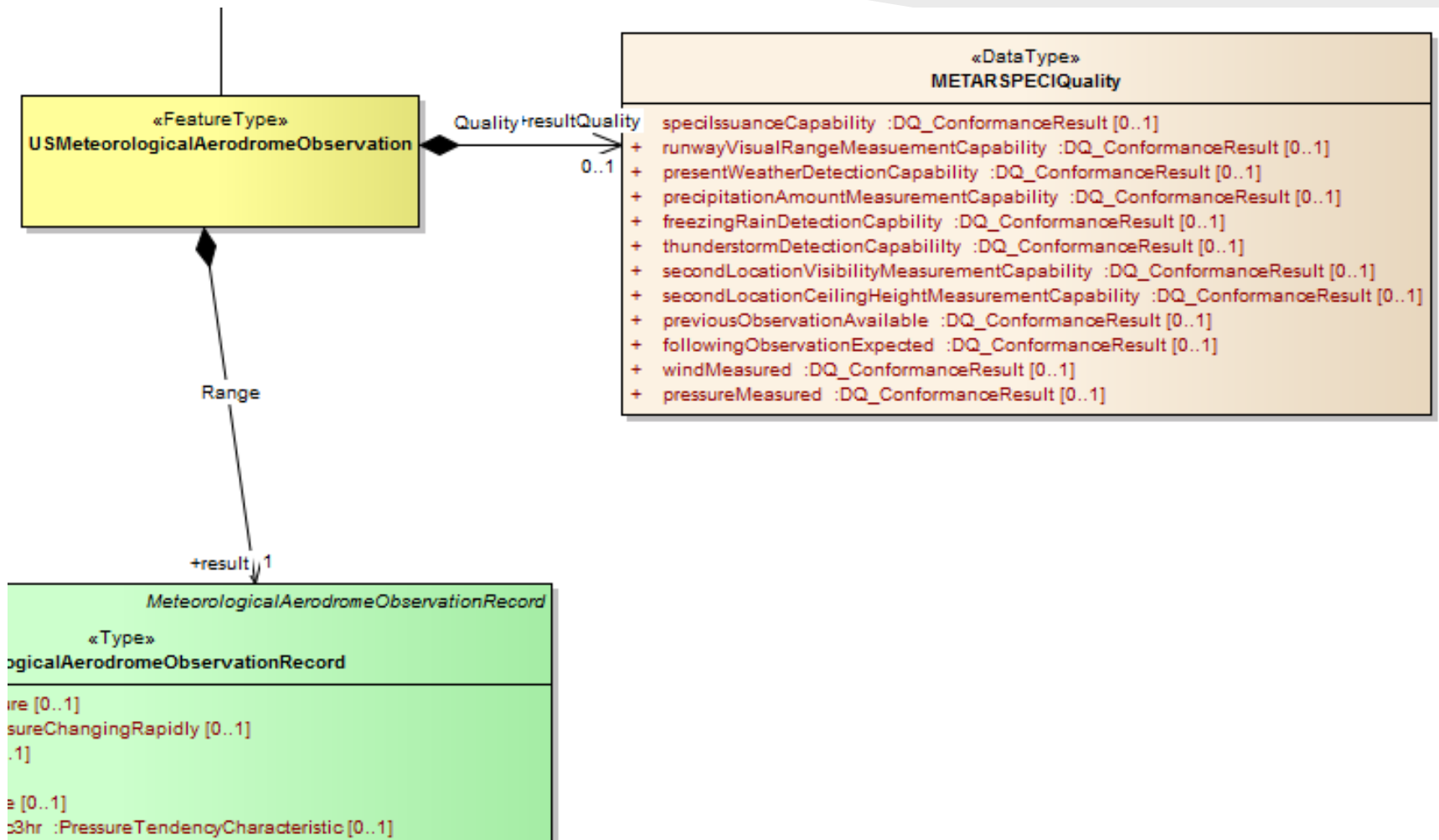
USMETAR and USSPECI



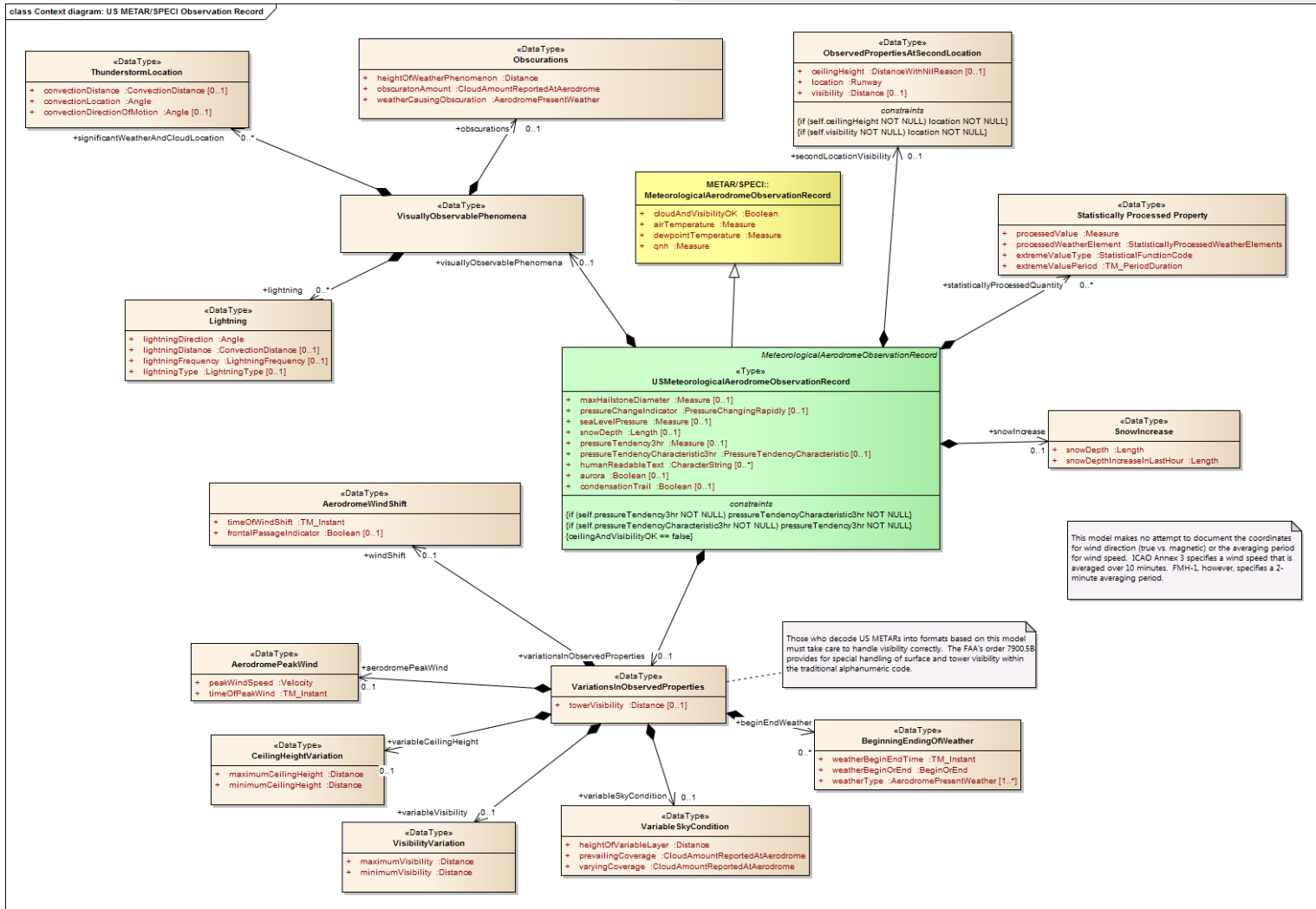
USMeteorologicalAerodromeObservation



USMeteorologicalAerodromeObservation

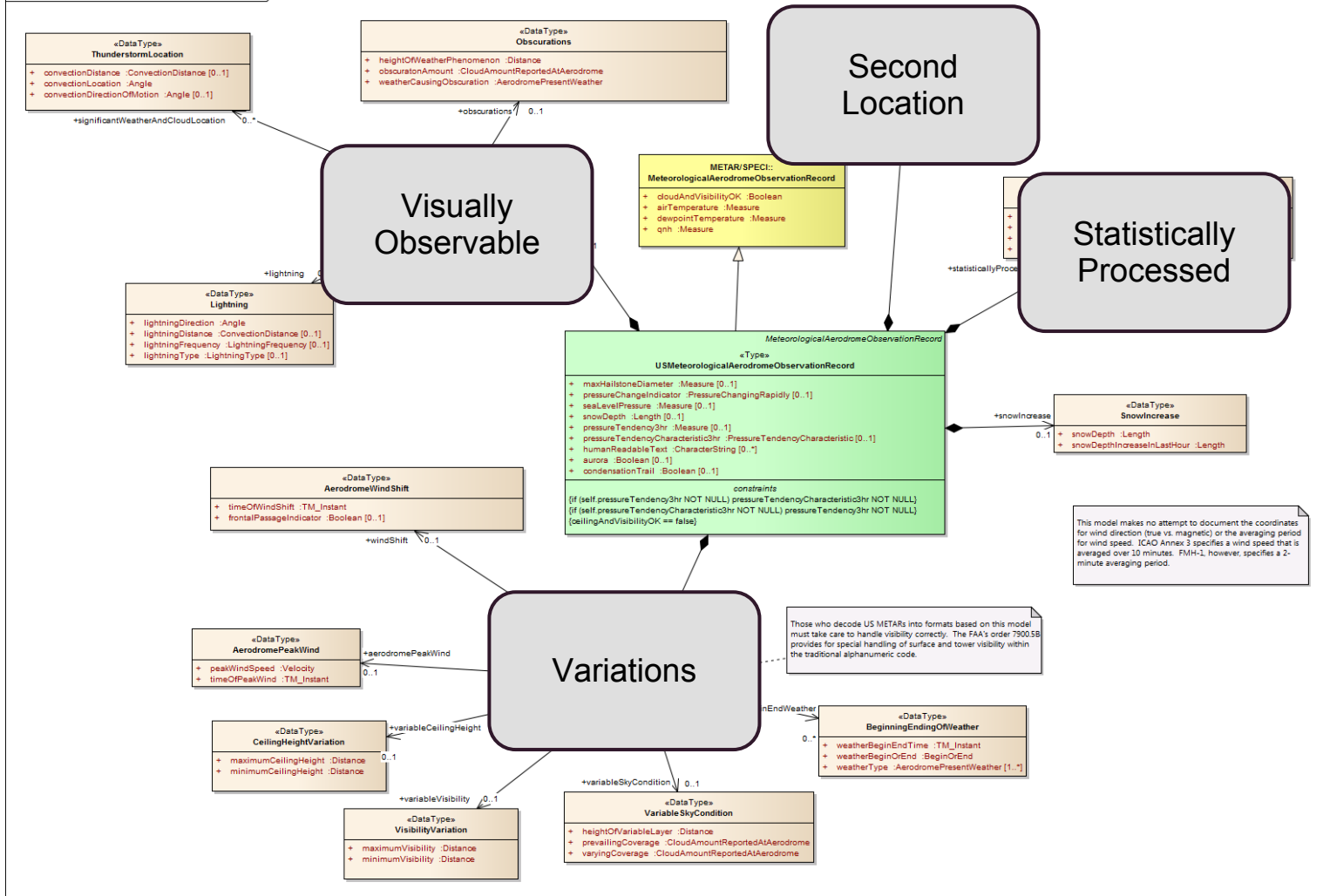


USMeteorologicalAerodromeObservationRecord



USMeteorologicalAerodromeObservationRecord

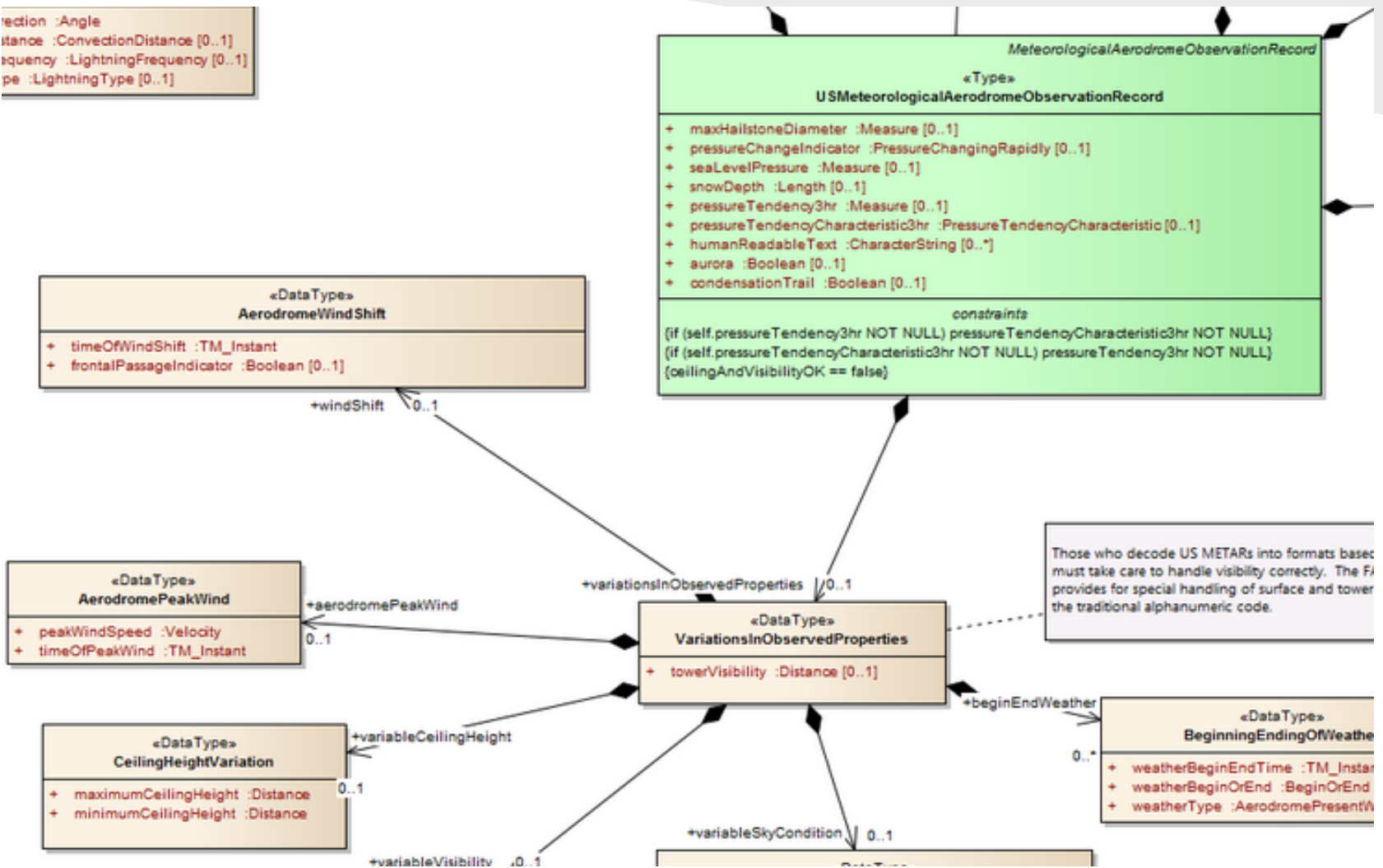
class Context diagram: US METAR/SPECI Observation Record



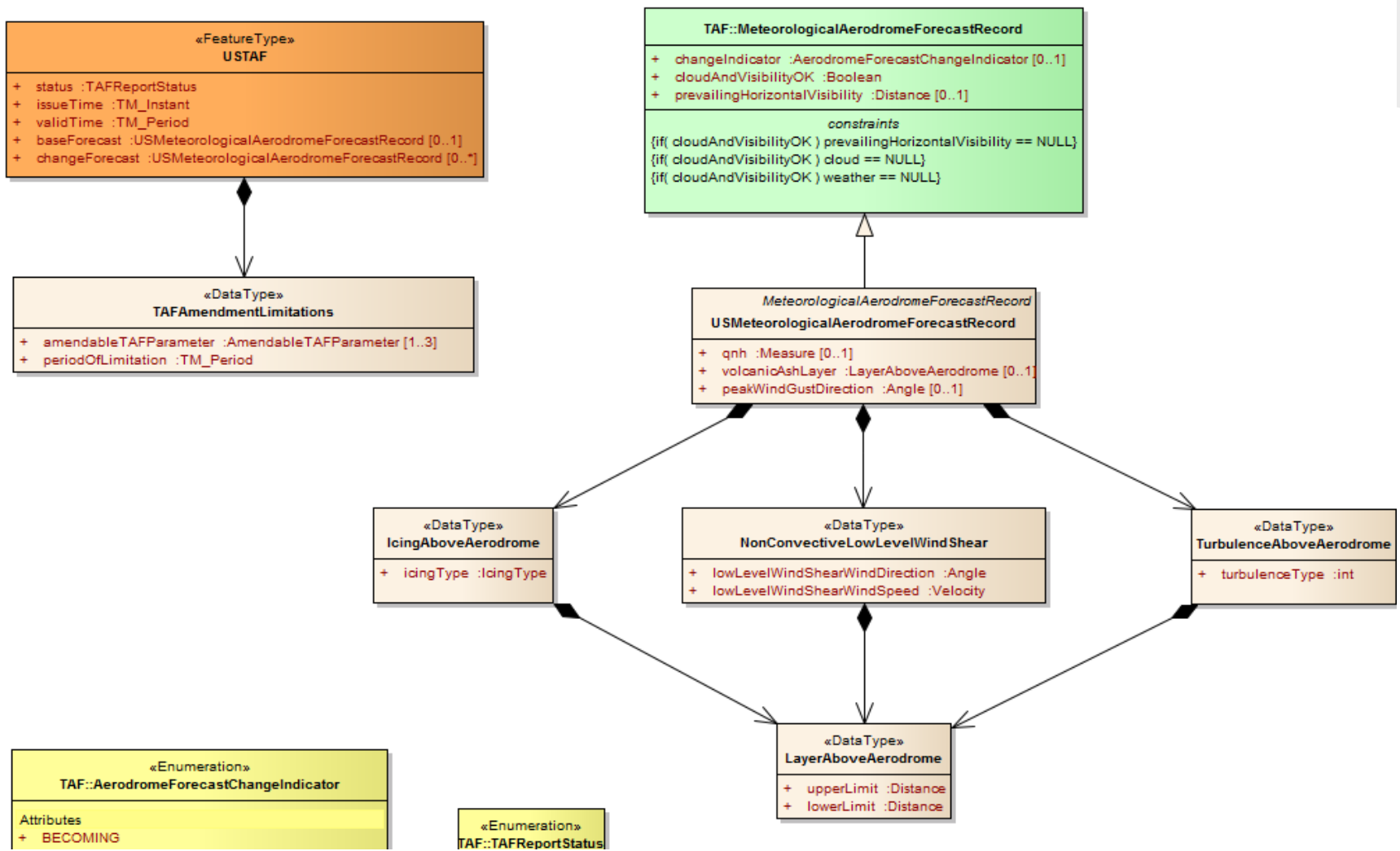
USMeteorologicalAerodromeObservationRecord

```

direction :Angle
distance :ConvectionDistance [0..1]
frequency :LightningFrequency [0..1]
type :LightningType [0..1]
    
```

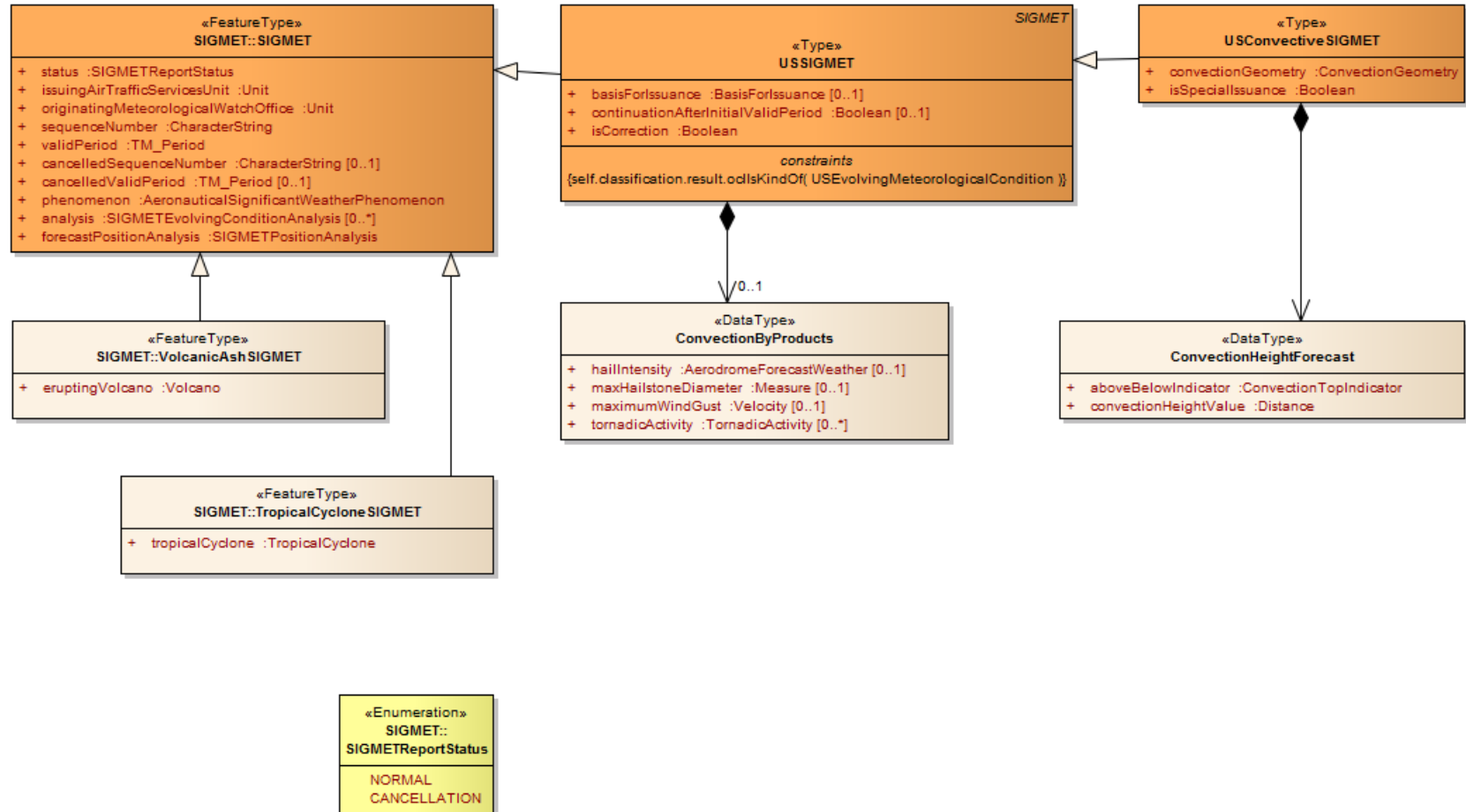


USTAF



USSIGMET

class Context diagram: US SIGMETs



Schemas and Code Lists

Planned go-live 15 October 2013

- <http://www.weather.gov/schemas/external/iwxxm-us>
- <http://www.weather.gov/codes>