

Air Transportation Information Exchange Conference

August 29, 2012

Dennis E. Wisnosky
DoD BMA CTO & Chief Architect (RET)

DoD Semantics Technology Clip

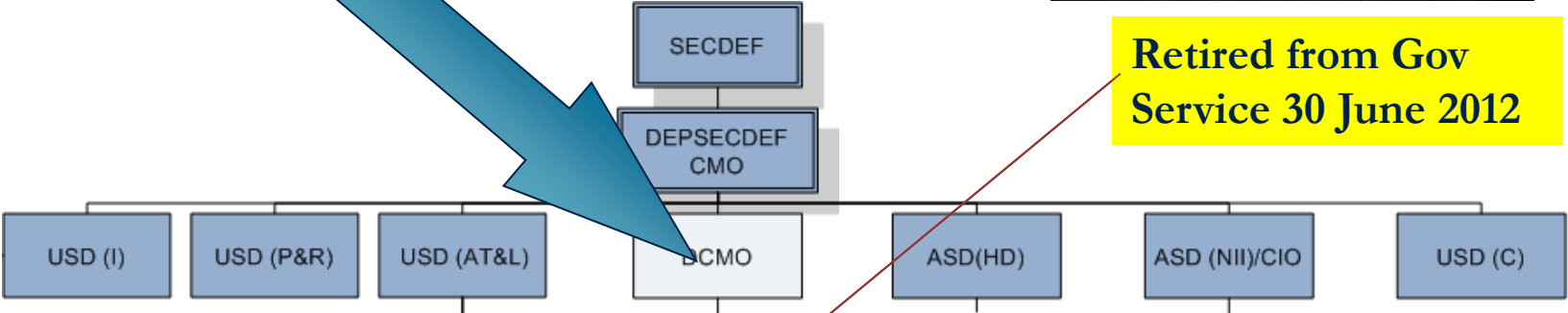
Video #2

DCMO CTO/CA

Missions of the DoD



Retired from Gov Service 30 June 2012

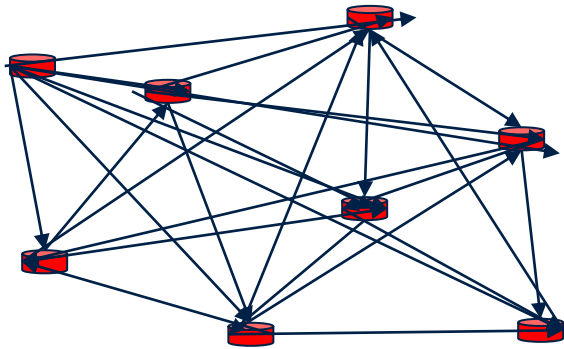


Dennis E. Wisnosky, DoD BMA CTO & Chief Architect in the Office of the Deputy Chief Management Officer (DCMO)



Heading, Altitude, Airspeed!

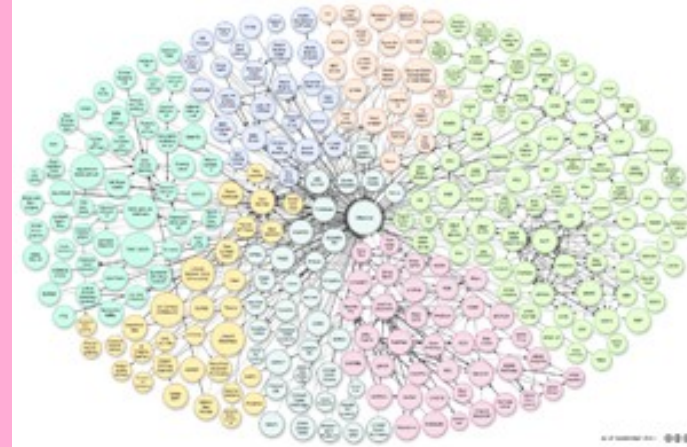
Semantic Web: Heading, Altitude and Airspeed



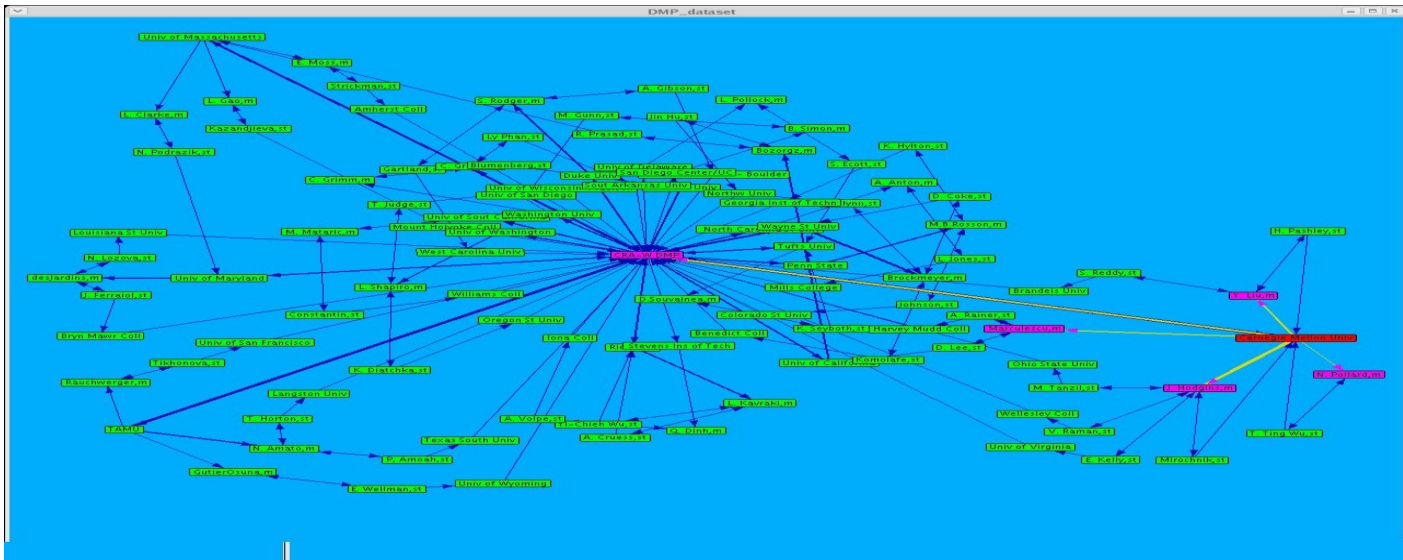
(near) Exponential connections ($n^2 - n$)

I don't want BIG DATA!
I want little data!

I want what I want,
I want what I need,
I want to know it is right,
I want it when I need it.



(near) Linear connections ($2n-1$)



Force Directed Graph

August 28, 2012

The Journey!

The Need for Change in the 21st Century

“Pentagon Bureaucracy - It disrupts the defense of the United States and places the lives of men and women in uniform at risk.

.....the Department of Defense will shift our focus and our resources *from bureaucracy to battlefield, from tail to tooth.*” SecDef, 10 Sept. 2001



BMMP Business Management Modernization Program

2002 - BMMP and the BEA was to drive-in cost accountability and drive-out redundancy.



This called for an Architecture

DoD Business Enterprise Architecture (BEA) Progression

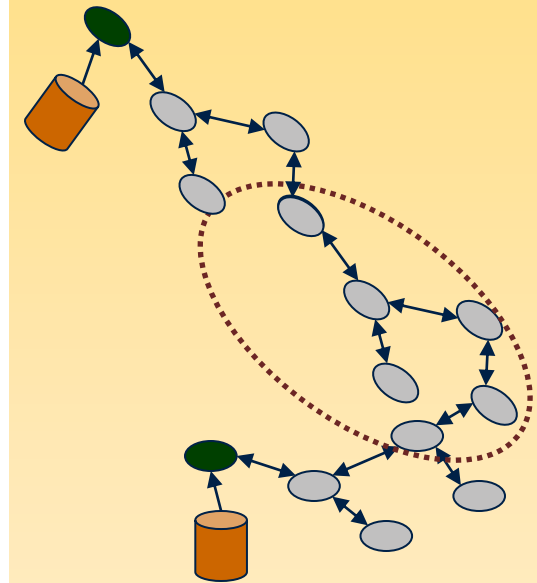
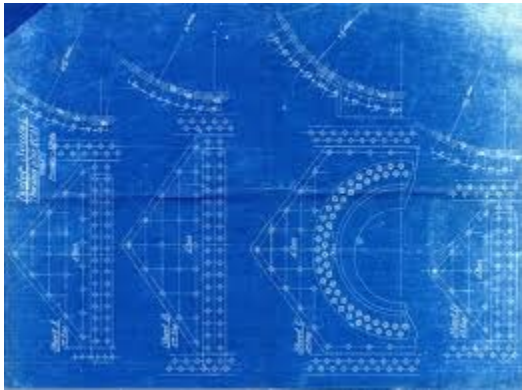
Blueprinting



BEA - Stovepiped



BEA - Semantic



Branch office-based;
readable but not
analyzable; stovepiped

Business Mission-based;
readable within a Business
Mission;

End-to-End based;
analyzable; executable;

BEA 1.0 – 2.4
“Boil the Ocean”

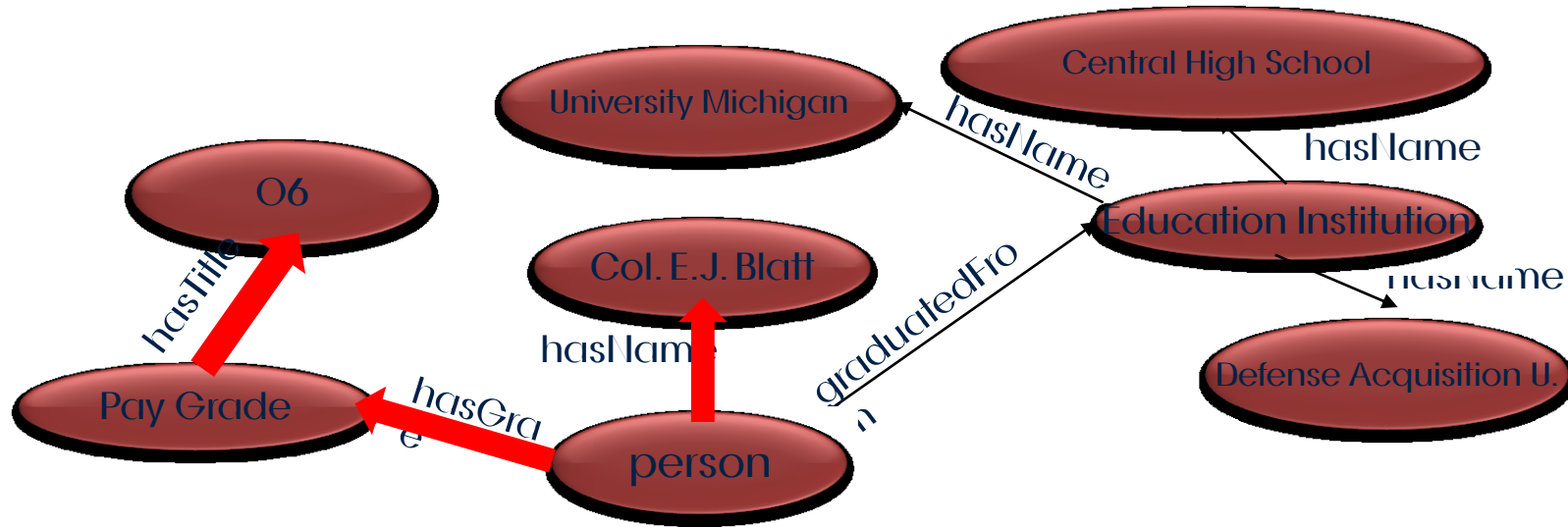
BEA 3.0 - 9.0
“Prioritized”

BEA 10.0 and later
“Executable”

SEMANTIC WEB – HOW IT WORKS

HR Dataset

Graph1



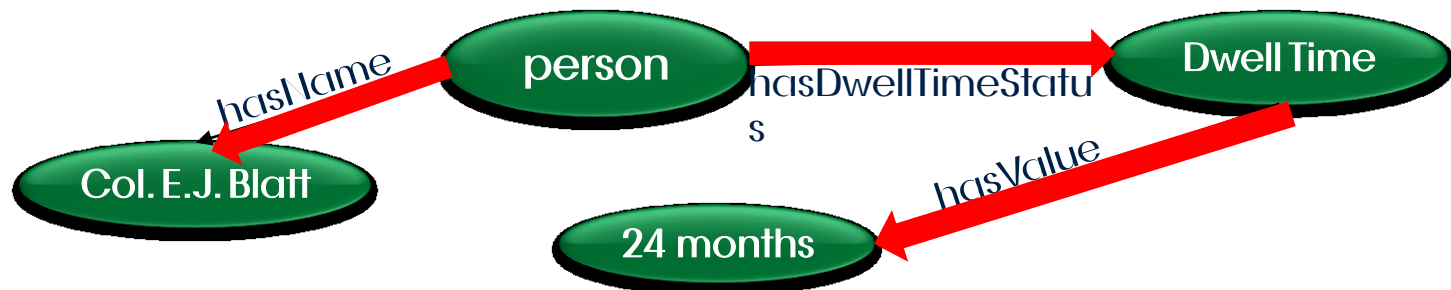
What Pay Grade is Col. Blatt?

SEMANTIC WEB – HOW IT WORKS

How much Dwell Time does Col. Blatt have?

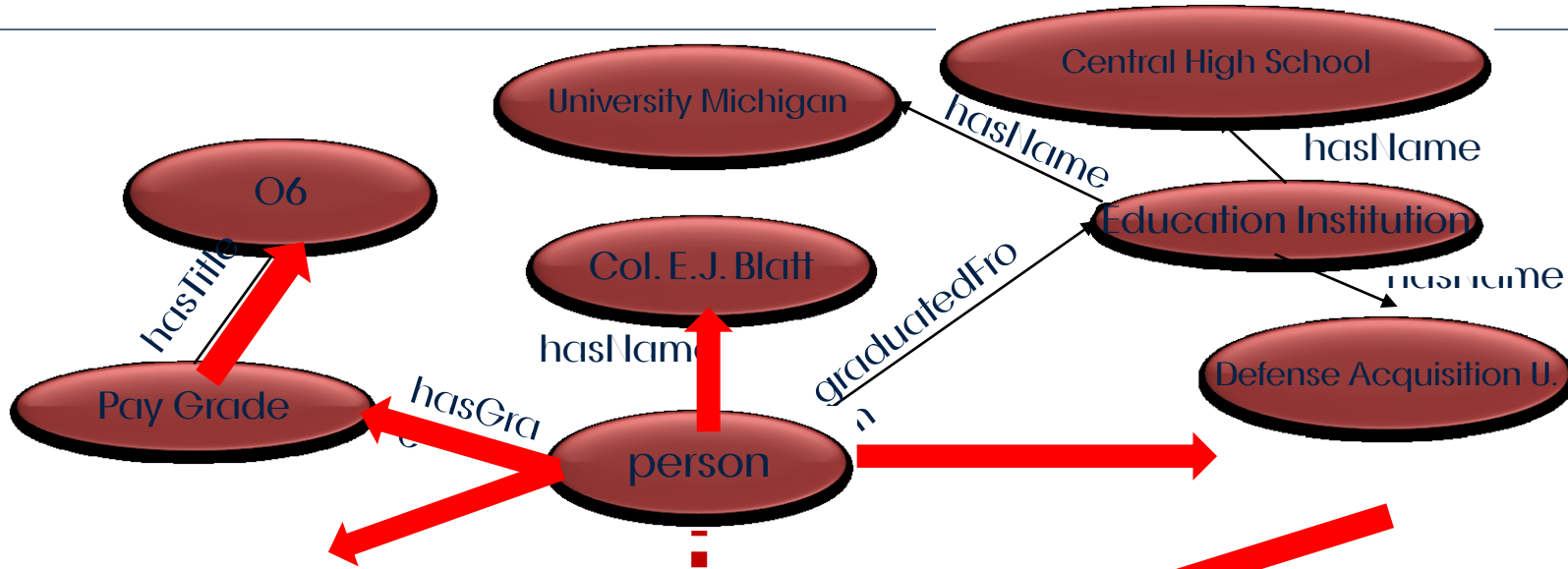
Graph2

Deployment History



SEMANTIC WEB - HOW IT WORKS

HR Dataset



Graph3

Who has a Pay Grade of "O6" and has at least 24 months of Dwell Time?



Deployment History

DCMO Mandate - Standards Approach



DEPUTY CHIEF MANAGEMENT OFFICER
9010 DEFENSE PENTAGON
WASHINGTON, DC 20301-9010

APR 4 2011

MEMORANDUM FOR SECRETARIES OF THE MILITARY DEPARTMENTS

interoperability. It is also a tool for driving portfolio management and business process reengineering. BEA release 8.0 captured and defined the Department's 15 E2E business lifecycle models at a high level.

The BEA will remain aligned to the DoD Architecture Framework (DoDAF), currently DoDAF v 2.0). In order to facilitate integration of the systems and business architecture within

The BEA will remain aligned to the [REDACTED] currently DoDAF v 2.0). In order to facilitate integration of the systems and business architecture within the [REDACTED], the BEA will be described in an ontology using a common language {World-Wide Web Consortium (W3C) open standards [REDACTED] and modeling notation (Business Process Modeling [REDACTED]). These open standards shall be applied to all subordinate Enterprise and solution architectures federated or asserting compliance with the BEA.

Enterprise Architecture (BEA) within the context of the DoD Enterprise Architecture. This essential framework will be used by the DBSMC and the supporting Investment Review Board (IRB) process to guide and constrain business system investments and conduct business process reengineering determinations as required by statute.


This memorandum outlines a new approach to leverage the E2Es defined within the BEA and provides the illumination necessary to achieve the management and interoperability required by statute. The Assistant Deputy Chief Management Officer will issue additional guidance to ensure these approaches are clearly applied to these management efforts. Additional guidance will identify future "time boxed" BEA development activities in consultation with the E2E Governance Council.

The BEA is the Enterprise's blueprint for defining the Department's business environment. It captures required Enterprise capabilities; metrics aligned to the Department's Strategic Management Plan; processes, data standards and rules to permit system and Web service



business architectures shall demonstrate compliance with BEA content via participation and conformance with procedures and processes described herein. The DBSMC will receive quarterly BEA updates via the E2E Governance Council.

My point of contact for this matter is Robert Jennings, robert.jennings@osd.mil or 703-614-0214.


Elizabeth A. McGrath

DoD Federated/Net-centricity and DCMO Approach

“Enterprise Architecture Federation Strategy” on Semantic Alignment excerpt:

A key goal of net-centricity is to enable semantic understanding of data so that interoperability can be achieved between any applications that have the ability to access and interpret the structural and semantic rules associated with data.

“Net-centric Data Strategy” on Interoperable excerpt:

Data Interoperability - The ability of two or more systems or components to exchange information and to use the information that has been exchanged.

Goal: [redacted] prioritization and collaboration based on immediate operational needs while providing enterprise infrastructure for self-synchronization on a larger scale

BEA - DoD Federated/Net-centric approach through Standard Semantic Specifications:

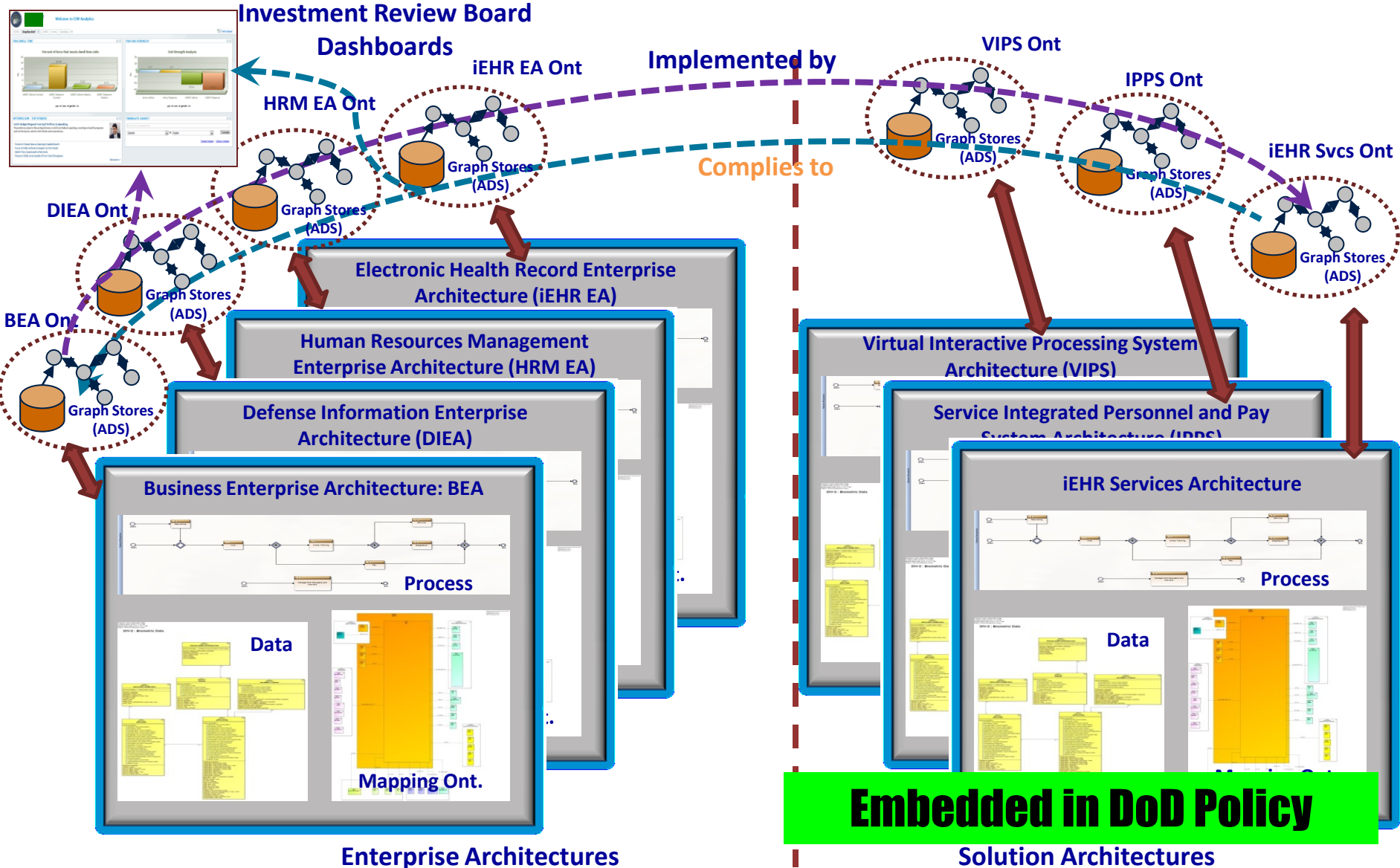
Use of semantic standards to realize DoD federated understanding of data

- OWL (Web Ontology Language)
- OWL-DL (Descriptive Logic)
- SPARQL 1.1 (OWL Query Language)
- BPMN2.0/BPMN 2.0 primitives (Business Process)
- Standards adopted by DoD in the DISR



A standards based semantic understanding between enterprise applications supports the shift from a stale data warehousing approach to federated dynamic retrieval of authoritative data sources approach

Federation and Compliance through Semantic Architecture



Enterprise Architectures

Solution Architectures

Benefits of OWL based Ontologies?



- OWL is an industry standard to express Ontologies:
 - WC3 open specification
 - Support from Open Source and COTS tool vendors
 - Tools exist to create/visualize OWL files, and process OWL rules
 - Active growing community continues to submit new, rich, supporting
- http://www.starlab.vub.ac.be/teaching/Ontologies_Intr_Overv.pdf
 - Captures both data, and rules that can be quickly adjusted in a controlled fashion vs. capturing rules in code with a long change/deploy process
 - Formal logic and supports reasoning
- Interoperability:
 - OWL files are easily shared, making structures visible and well understood
 - SPARQL query specifications provide solution to dynamic federated queries
 - Same concepts with different terms across federated ontologies can be resolved via OWL “sameAs” constructs

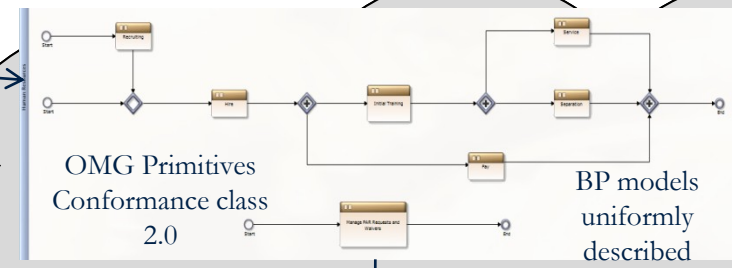
Advances goal of establishing DoD architectures that are people readable, machine readable a **Ontologies DoD needs!**

DCMO Federation via Semantic Standards



Use

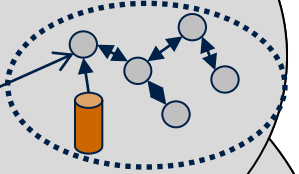
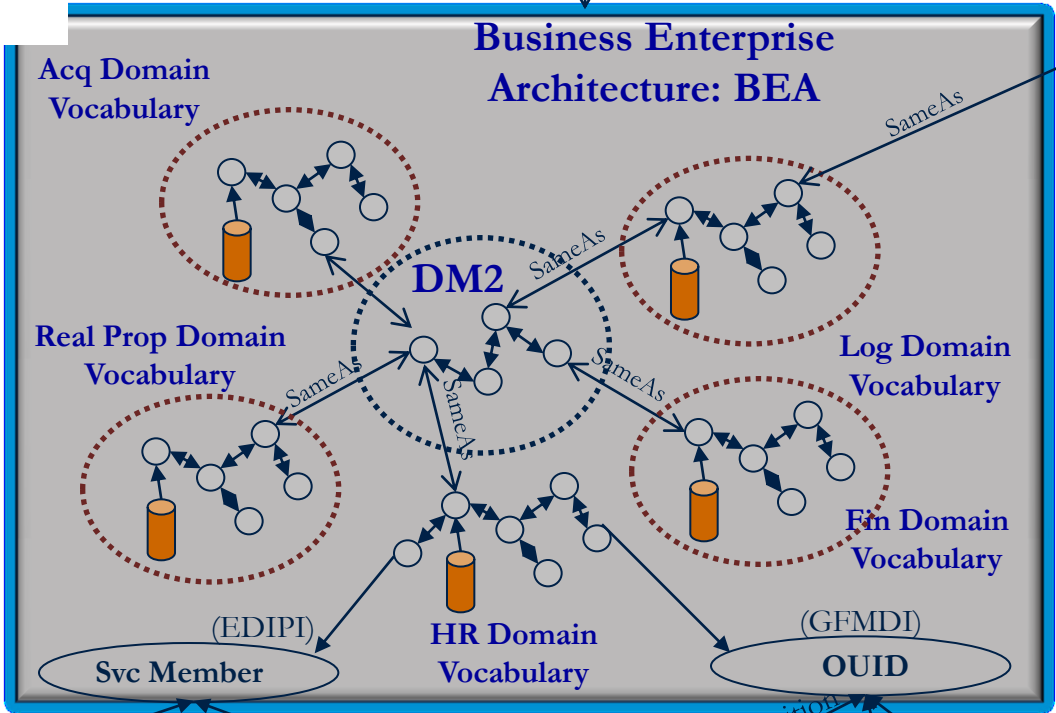
NCES



DoD EA

Query BEA *directly*:

- Enterprise analytics
- Compliance
- IRB/portfolio management



Warfighter Domain Vocabulary

Watch for DoDAF 2.03!

W3C Open Standards Legend:

○ Data described in RDF ↔ Relationship described in OWL

🗄 DoD Authoritative Data Source

Semantic Strategy: Tiered Accountability to GIG and DITA through JIE

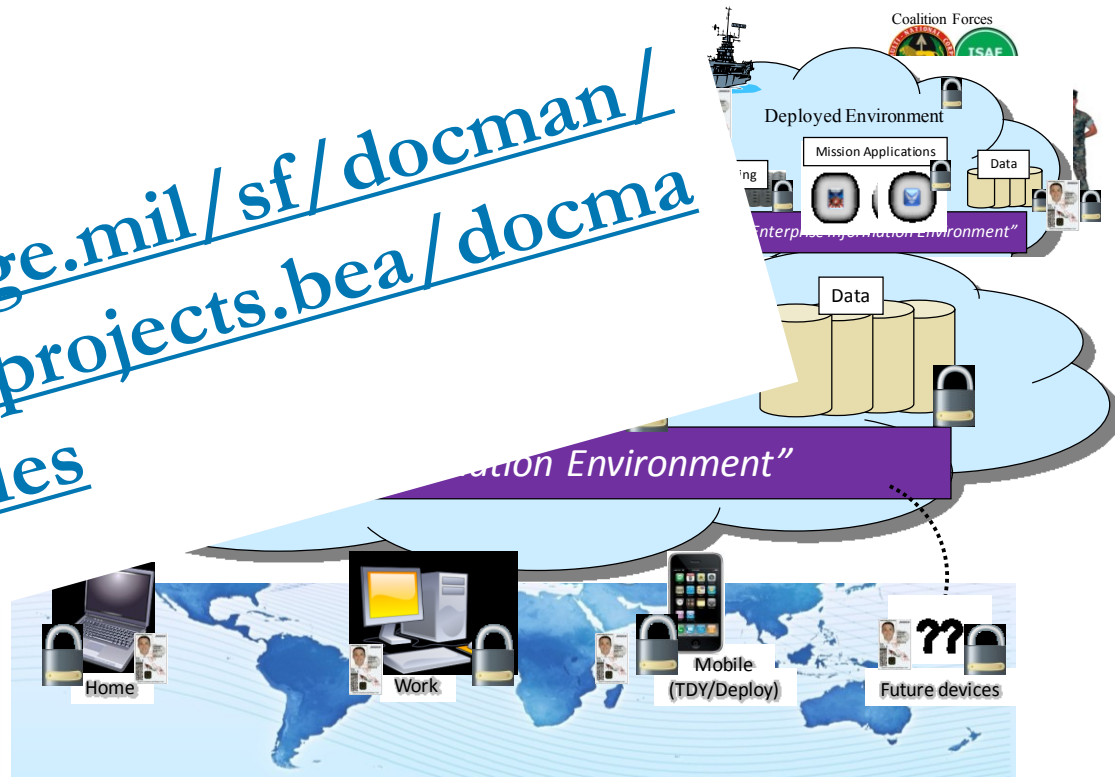
<https://software.forge.mil/sf/docman/do/listDocuments/projects.bea/docman.n.root.bea.ontologies>

Information Models

FL β

	WHAT	WHO	HOW
DoD TIER ENTERPRISE	GIG EA and DIEA	DCIO w/ Joint Community	Joint Enterprise, Component &
SEGMENT TIER ENTERPRISE	BEA, CBMA & other EAs	Enterprise CIOs (BECCM)	Program Architects using
COMPONENT TIER LEVEL	Component EA	Component CIOs + CMOs	OWL/RDF, SPARQL, Primitives
PROGRAM TIER LEVEL	System Architectures	Programs of Record	

Each tier glues the next



Department (DoD)

JCAs, Mission Areas

Component

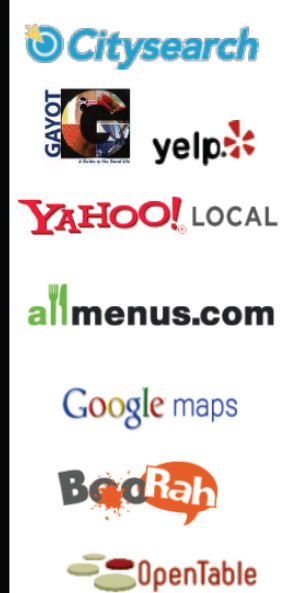
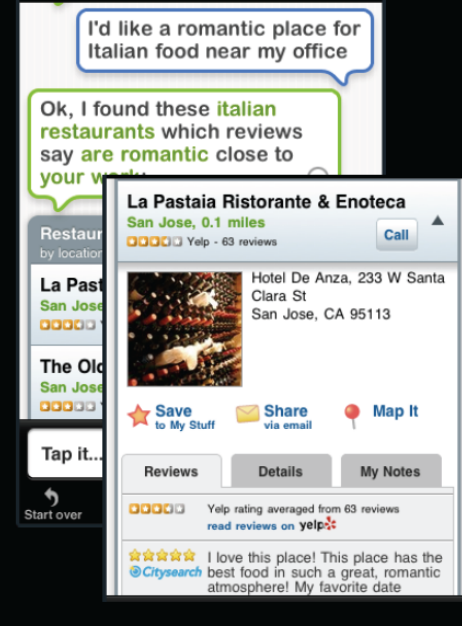
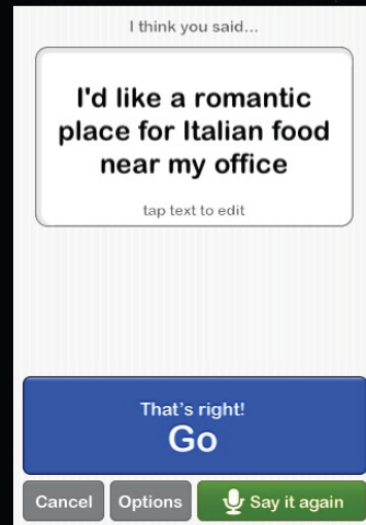
Solution

We have the Technology now!

We have the technology now

Think *Apple iPhone Siri!!*

Applying multiple sources to solve a problem



Source: Tom Gruber, Inventor of Siri
<http://www.tomgruber.com>

Aroundme
Sky Map
Evi

View Graph Engineering Example!

The next phase – Getting EIW to the Warfighter



Tactical - Edge

Subsystem

CONUS

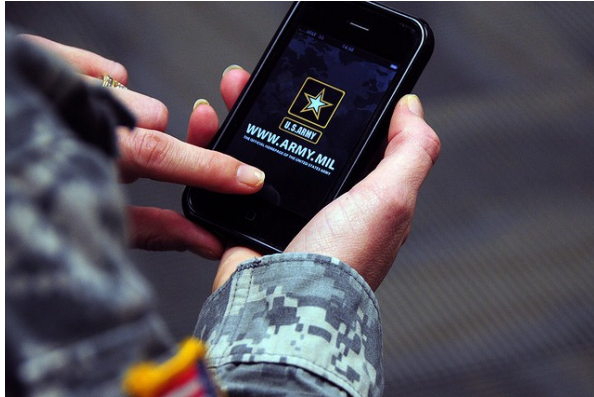
xml csv

• RSS

I don't want Big Data!

Meeting the Data Mandate for the Warfighter

“.....from bureaucracy to battlefield, from tail to tooth”



**I don't want BIG DATA!
I want my data!**

**I want what I want,
I want what I need,
I want to know it is right
I want it when I need it.**



“Interrogative: Where is it?”



**Semantics relates unstructured data to structured,
Semantics delivers the right structure,
Semantics reduces the Warfighter Information Overload.**

Thank you!

Thank you!

Questions?
Dennis@wisnosky.net

